

Actual Acton-Boxborough Grade K-6
March 1st, 2017

| Grade | Blanchard | | | Total | Conant | | | | Total | Douglas | | | Total | Gates | | | Total | McCarthy | | | | Total | Merriam | | | | Incoming | Total | #Sec. | Avg. Size |
|--------------|--------------------|---------------------|------------|----------------|---------------------|------------|----------------|---------------------|------------|----------------|---------------------|------------|----------------|---------------------|-----------------|----------------|---------------------|------------|----------|-----------------|------------|--------------|---------|-----------------|-----|------|----------|-------|-------|-----------|
| | 47 ADK 16 AM | | | | 39 ADK 21 AM | | | | | | 29 ADK AM | 17 | | | 21 ADK AM | 21 | | | | 43 ADK AM | 21 | | | 42 ADK AM | 21 | | | | | |
| K | 19 4 | 20 4 | 15 0 | 62 | 19 | 20 | 21 | 60 | 23 | 23 | 46 | 21 | 21 | 42 | 21 | 22 | 21 | 64 | 21 | 21 | 21 | 63 | 0 | 337 | 16 | 21.1 | | | | |
| Rm | 216/ 217 | 218/ 217 | 226 | 20 | 1 | 2 | 3 | 0 | 2 | 1 | 1 | 4 | 2 | 1 | 111 | 112 | 110 | 2 | 131 | 132 | 135 | 0 | 24 | | | | | | | |
| Gr. 1 | 10 1 | 20 | 20 | 51 | 20 | 20 | 40 | 20 | 20 | 19 | 59 | 19 | 20 | 20 | 59 | 19 | 20 | 20 | 59 | 20 | 19 | 20 | 59 | 0 | 327 | 16.5 | 19.8 | | | |
| Rm | 215/ 217 | 213 | 211 | 2 | 5 | 4 | 1 | 5 | 4 | 3 | 1 | 3 | 5 | 6 | 2 | 310 | 311 | 312 | 0 | 223 | 224 | 234 | 1 | 7 | | | | | | |
| Gr. 2 | 10 1 | 21 | 21 | 53 | 24 | 22 | 46 | 23 | 23 | 24 | 70 | 24 | 24 | 23 | 71 | 23 | 23 | 24 | 70 | 23 | 24 | 23 | 70 | 0 | 380 | 16.5 | 23.0 | | | |
| Rm | 215/ 217 | 227 | 219 | 13 | 6 | 7 | 1 | 7 | 6 | 8 | 5 | 7 | 8 | 10 | 1 | 301 | 302 | 303 | 2 | 133 | 231 | 334 | 1 | 23 | | | | | | |
| Gr. 3 | 22 | 23 | 45 | 25 | 23 | 25 | 73 | 24 | 24 | 24 | 72 | 25 | 25 | 50 | 23 | 24 | 23 | 70 | 21 | 20 | 20 | 22 | 83 | 0 | 393 | 17 | 23.1 | | | |
| Rm | 229 | 231 | 4 | 9 | 10 | 17 | 2 | 9 | 10 | 11 | 0 | 20 | 9 | 0 | 313 | 314 | 315 | 2 | 100 | 233 | 322 | 323 | 2 | 10 | | | | | | |
| Gr. 4 | 20 | 22 | 20 | 62 | 22 | 23 | 21 | 22 | 88 | 23 | 23 | 23 | 69 | 23 | 23 | 46 | 25 | 23 | 22 | 70 | 23 | 25 | 24 | 72 | 0 | 407 | 18 | 22.6 | | |
| Rm | 245 | 243 | 247 | 10 | 8 | 20 | 19 | 18 | 0 | 12 | 13 | 14 | 0 | 15 | 19 | 2 | 213 | 214 | 215 | 3 | 230 | 330 | 331 | 0 | 15 | | | | | |
| Gr. 5 | 24 | 23 | 24 | 71 | 24 | 23 | 23 | 70 | 23 | 23 | 23 | 69 | 24 | 23 | 24 | 71 | 22 | 22 | 23 | 67 | 22 | 23 | 23 | 68 | 0 | 416 | 18 | 23.1 | | |
| Rm | 118 | 130 | 128 | 7 | 16 | 15 | 14 | 2 | 19 | 20 | 21 | 1 | 11 | 17 | 18 | 0 | 210 | 211 | 212 | 4 | 235 | 321 | 324 | 0 | 14 | | | | | |
| Gr. 6 | 24 | 23 | 24 | 71 | 25 | 25 | 26 | 76 | 25 | 24 | 25 | 74 | 25 | 25 | 25 | 75 | 26 | 24 | 25 | 75 | 26 | 23 | 25 | 25 | 99 | 0 | 470 | 19 | 24.7 | |
| Rm | 110 | 112 | 108 | 10 | 13 | 12 | 11 | 2 | 15 | 16 | 17 | 1 | 12 | 13 | 14 | 1 | 113 | 114 | 115 | 2 | 232 | 332 | 333 | 335 | 0 | 16 | | | | |
| | | | | 66 | | | | 8 | | | 9 | | | 7 | | | 15 | | | | | | 4 | 109 | | | | | | |
| Total | 20 Sec. | Average 21.8 | 415 | 20 Sec. | Average 22.7 | 453 | 20 Sec. | Average 23.0 | 459 | 18 Sec. | Average 23.0 | 414 | 21 Sec. | Average 22.6 | 475 | 23 Sec. | Average 22.3 | 514 | 0 | 2730 | 121 | 22.56 | | | | | | | | |

66 Acton residents attend Boxborough
43 Boxborough residents attend school in Acton

**ACTON-BOXBOROUGH REGIONAL SCHOOL DISTRICT
ACTON AND BOXBOROUGH, MASSACHUSETTS**



**PROPOSED BUDGET
Academic Year 2017-2018**

Spring 2017

ACTON-BOXBOROUGH REGIONAL SCHOOL DISTRICT

TABLE OF CONTENTS

| | |
|---|-------|
| Superintendent’s Message..... | 1 |
| Proposed FY’18 Budget Summary by Character Code..... | 2 |
| Analysis of Assessments (Table 6) - FY’18..... | 3 |
| History of Chapter 70 State Aid - FY’09-FY’18 | 4 |
| Budget Categories – FY’18..... | 5 |
| Personnel Breakdown – FY’18 | 6 |
| Comparative Data FY’16: Per Pupil Costs, Student-Teacher Ratios, SATs | 7 |
| Total Expenditures – FY’16: Actual by Funding Source | 8 |
| Grant Awards - FY’16-FY’17 | 9 |
| Students, Staff, Class Size – FY’16-FY’18 | 10-11 |
| School Highlights..... | 12-14 |

Superintendent of Schools

Dr. Glenn A. Brand

2016-2017 Acton-Boxborough Regional School Committee

Mary Brolin, Chairperson
Amy Krishnamurthy, Vice Chair
Kathleen Neville, Vice Chair
Diane Baum
Brigid Bieber
Maya Minkin
Paul Murphy
Maria Neyland
Deanne O’Sullivan
Kristina Rychlik
Eileen Zhang

ACTON-BOXBOROUGH REGIONAL SCHOOL DISTRICT
FY'18 SUPERINTENDENT'S BUDGET MESSAGE

Dear Acton and Boxborough Community Members,

It is my pleasure to provide the citizens of Acton and Boxborough with this proposed operating budget request for the 2017-18 school year. The proposed budget for the Acton-Boxborough Regional School District is \$86,090,491, reflecting an increase of 3.63% over the current fiscal year.

Of this total increase, 2.8% represents the overall operating increase, 0.6% represents increasing capital investments and 0.23% represents the increased allocation to support the shift of the assessment cost for the Minuteman program at the RJ Grey Junior High School from the two towns to the region.

This budget proposal strives to accomplish a number of things:

- Preserve our commitment to maintaining existing services while at the same time aligning any additional requests with our stated goals and values.
- Make appropriate adjustments in reduction and/or realignment of existing resources responsive to the changing conditions in the district.
- Maintain reasonable class sizes across our entire system, allowing us to adhere to class size guidelines based upon our current enrollment projections.
- Preserve our current programs and services delivered by almost 1,100 full- and part-time staff and, where appropriate, expand programming to meet the needs of our students.

There are significant factors impacting a regional school district that are different from the needs of a school system in a single town setting. Such distinctions include items such as employee fringe benefits (i.e. health insurance), retirement planning (i.e. OPEB and Middlesex County Retirement), and capital planning. These budget drivers are factors that largely account for the increases included within the FY'18 budget proposal.

Specific highlights of the FY'18 budget proposal include the following:

- i) **Contractual Salary Increases** - salaries account for 62.73% of our overall operating expenses and reflect a total increase of 3.44% from the current year
- ii) **Workers Compensation** - an overall increase of \$305,000, a 103.4% increase.
- iii) **Middlesex County Retirement** - a total increase of \$232,688, an 11.2% increase.
- iv) **Capital Outlay** - a total increase of 97.5% from \$527,059 in FY'17 to \$1,041,198 in FY'18. Key projects in this line include the replacement of the turf at Leary Field (\$450,000), the replacement of boilers and pumps at Blanchard Elementary School (\$189,750), and repairing an exterior heaving issue at the Conant School (\$75,000).

The development of this budget is a long and extensive process and has relied upon considerable input and support along the way. I want to extend my sincere thanks to our Director of Finance, Ms. Clare Jeannotte, the entire Finance Department, our School Leadership Team, the Budget Subcommittee, and the entire ABRSD School Committee for their contributions throughout this entire process that began last September.

On behalf of the School Committee, I want to thank the members of these fine communities that we serve for their continued support of our public school system.

It is an honor and a privilege to serve as the superintendent in this outstanding educational community and I welcome your comments or questions regarding the FY'18 budget proposal.

Yours in education,

Glenn A. Brand, Ed.D.
Superintendent of Schools

**Acton-Boxborough Regional School District
FY'18 Proposed Budget Summary by Character Code**

| | FY16 Actual Expenses + Enc | FY17 Revised Budget | FY18 Recommended Budget | FY18 \$ Increase (Decrease) | FY18 % Increase (Decrease) |
|---|----------------------------------|------------------------|-------------------------------|-----------------------------------|----------------------------------|
| Salaries, Teaching - 01 | 32,527,166 | 33,992,708 | 34,957,155 | 964,447 | 2.8% |
| Salaries, Principals - 02 | 2,170,250 | 2,237,321 | 2,393,559 | 156,238 | 7.0% |
| Salaries, Central Administration - 03 | 1,127,878 | 1,187,267 | 1,249,128 | 61,861 | 5.2% |
| Salaries, Support Staff - 04 | 9,029,830 | 9,319,200 | 9,744,533 | 425,333 | 4.6% |
| Salaries, Athletics - 05 | 483,412 | 520,850 | 554,931 | 34,081 | 6.5% |
| Salaries, Buildings - 06 | 706,266 | 732,102 | 808,007 | 75,905 | 10.4% |
| Salaries, Custodial - 07 | 1,400,065 | 1,501,995 | 1,531,398 | 29,403 | 2.0% |
| Salaries, Home Instruction - 08 | 2,279 | 8,500 | 8,500 | - | 0.0% |
| Salaries, Miscellaneous Pupil Services - 09 | 1,490,306 | 1,575,266 | 1,574,847 | (419) | 0.0% |
| Salaries, Subs Miscellaneous - 11 # | 52,457 | 66,691 | 73,103 | 6,412 | 9.6% |
| Salaries, Subs Instructional - 12 # | 702,211 | 671,642 | 681,212 | 9,570 | 1.4% |
| Salaries, Overtime - 13 | 223,810 | 232,855 | 233,215 | 360 | 0.2% |
| Stipends, Curriculum/Instruction - 14 | 161,350 | 166,000 | 197,000 | 31,000 | 18.7% |
| Fringe, Course Reimbursement - 15 | 35,867 | 56,000 | 56,000 | - | 0.0% |
| Fringe, Health Insurance - 16 | 8,250,345 | 8,623,581 | 8,385,796 | (237,785) | -2.8% |
| Fringe, Health Insurance, Retiree - 17 | 763,386 | 968,996 | 879,098 | (89,898) | -9.3% |
| Fringe, Life/Disability Insurance - 18 | 37,404 | 40,900 | 42,100 | 1,200 | 2.9% |
| Fringe, Unemployment Insurance - 19 | 40,354 | 40,000 | 40,000 | - | 0.0% |
| Fringe, Workers Compensation - 20 | 288,016 | 295,000 | 600,000 | 305,000 | 103.4% |
| Fringe, Middlesex County Retirement System - 21 | 1,961,424 | 2,086,065 | 2,318,753 | 232,688 | 11.2% |
| Fringe, Medicare - 22 | 755,496 | 825,000 | 825,000 | - | 0.0% |
| Contributions, OPEB Trust Fund - 23 | 700,000 | 800,000 | 900,000 | 100,000 | 12.5% |
| Instruction Supplies - 24 | 967,299 | 1,057,992 | 1,041,700 | (16,292) | -1.5% |
| Instruction Textbooks - 25 | 230,185 | 280,570 | 270,336 | (10,234) | -3.6% |
| Instructional, Library - 26 | 52,902 | 59,678 | 55,628 | (4,050) | -6.8% |
| Other, Capital Outlay - 27 | 476,816 | 527,059 | 1,041,198 | 514,139 | 97.5% |
| Other, Debt Service - 29 | 1,895,743 | 1,934,218 | 1,903,718 | (30,500) | -1.6% |
| Other, Property/Casualty - 30 | 164,181 | 177,424 | 182,959 | 5,535 | 3.1% |
| Other, Maint Buildings/Grounds - 31 | 944,343 | 732,745 | 759,020 | 26,275 | 3.6% |
| Other, Maintenance Equipment - 32 | 46,837 | 119,604 | 157,343 | 37,739 | 31.6% |
| Other, Legal Service - 34 | 107,228 | 181,350 | 161,350 | (20,000) | -11.0% |
| Other, Admin Supplies - 35 | 900,741 | 917,978 | 1,038,432 | 120,454 | 13.1% |
| Other, Athletic Supplies - 36 | 103,076 | 67,491 | 67,491 | - | 0.0% |
| Other, Custodial Supplies - 37 | 162,562 | 157,984 | 157,984 | - | 0.0% |
| Other, Sped Transportation - 38 | 1,619,628 | 1,826,934 | 1,784,024 | (42,910) | -2.3% |
| Other, Student Transportation - 39 | 804,619 | 880,393 | 887,468 | 7,075 | 0.8% |
| Other, Travel, Conferences - 40 | 107,931 | 121,934 | 128,563 | 6,629 | 5.4% |
| Other, Sped Tuition - 41 | 6,075,530 | 5,283,278 | 5,483,010 | 199,732 | 3.8% |
| Other, Utilities - 42 | 1,366,987 | 1,825,133 | 1,758,200 | (66,933) | -3.7% |
| Other, Telephone - 43 | 48,211 | 108,151 | 85,751 | (22,400) | -20.7% |
| Other, Sewer - 44 | 273,301 | 287,191 | 304,823 | 17,632 | 6.1% |
| Assessments - 48 ***** | 492,236 | 576,658 | 766,658 | 190,000 | 32.9% |
| Other, - 49 | 830 | 1,500 | 1,500 | - | 0.0% |
| GRAND TOTAL | \$79,750,757 | \$83,073,204 | \$86,090,491 | \$3,017,287 | 3.63% |

***** Assessments booked as Revenue offsets in FY16

Reclassifications have been made to FY16 Actual to conform to current year presentation

Acton Boxborough Regional School District
Public Hearing - FY18 Budget-Summary
February 16, 2017

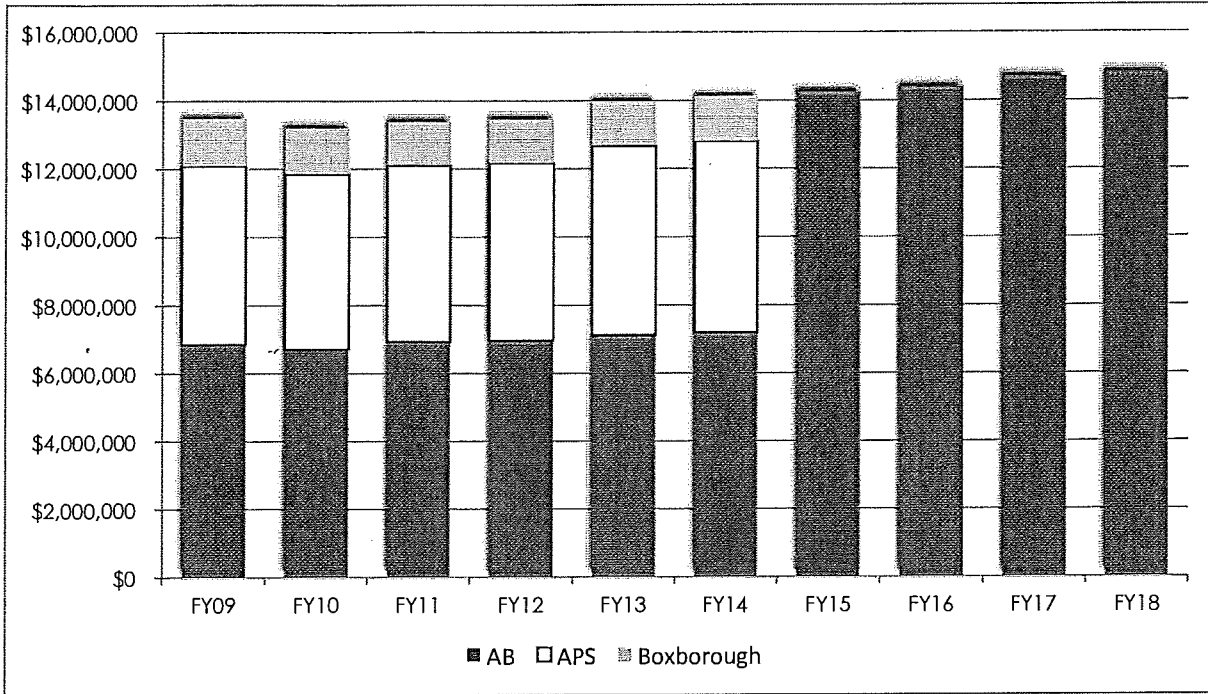
TABLE 6
ACTON-BOXBOROUGH REGIONAL SCHOOL DISTRICT
 Analysis of Assessments
 School Year 2017-2018

| | TOTAL BUDGET 2017-2018 | ACTON 84.91% 83.75% | BOXBOROUGH 15.09% 16.25% |
|---|---------------------------|---------------------------|--------------------------------|
| EXPENDITURES | | | |
| OPERATING BUDGET | \$82,326,048 | \$69,903,047 | \$12,423,001 |
| OPEB TRUST FUND CONTRIBUTION | \$900,000 | \$764,190 | \$135,810 |
| MINUTEMAN ASSESSMENT | \$190,000 | \$161,329 | \$28,671 |
| LOWER FIELDS CONSTRUCTION DEBT SERVICE | \$87,718 | \$77,850 | \$9,868 |
| CAPITAL OUTLAY - BUILDINGS & GROUNDS | \$770,725 | \$654,423 | \$116,302 |
| TOTAL INSIDE DEBT LIMIT | \$84,274,491 | \$71,560,839 | \$12,713,652 |
| EXPENDITURES OUTSIDE DEBT LIMIT (PREVIOUSLY AUTHORIZED BY REGION:) | | | |
| CONSTRUCTION DEBT SERVICE (FOR JHS & SHS/AUTHORIZED OUTSIDE PROP 2 1/2) | \$385,720 | \$342,327 | \$43,394 |
| SH CONSTRUCTION/RENOVATION | \$1,430,280 | \$1,269,374 | \$160,907 |
| TOTAL OUTSIDE DEBT LIMIT | \$1,816,000 | \$1,611,700 | \$204,300 |
| GROSS EXPENDITURE BUDGET-PAID BY ABRSD | \$86,090,491 | \$73,172,539 | \$12,917,952 |
| SHARE OF DEBT SERVICE ELEMENTARY SCHOOLS- PAID BY TOWNS | 829,912 | \$704,678 | \$125,234 |
| TOTAL REGIONAL DISTRICT EXPENDITURES | 86,920,403 | 73,877,217 | 13,043,186 |
| REVENUES & RESERVE USE | | | |
| CHAPTER 70 BASE AID | \$14,804,931 | \$12,570,867 | \$2,234,064 |
| CHARTER SCHOOL AID | \$25,350 | \$21,525 | \$3,825 |
| REGIONAL SCHOOL TRANSPORTATION | \$1,307,373 | \$1,110,090 | \$197,283 |
| REGIONAL BONUS AID & MISC REVENUES | \$179,000 | \$151,989 | \$27,011 |
| TRANSFER FROM RESERVES (Excess & Deficiency) | \$450,000 | \$382,095 | \$67,905 |
| TOTAL REVENUES AND RESERVE USE | \$16,766,654 | \$14,236,566 | \$2,530,088 |
| TOWN ASSESSMENTS- BEFORE APPENDIX A & IMA | \$70,153,749 | \$59,640,651 | \$10,513,098 |

Calculation of Final Assessments Per Appendix A to Regional Agreement - FY18

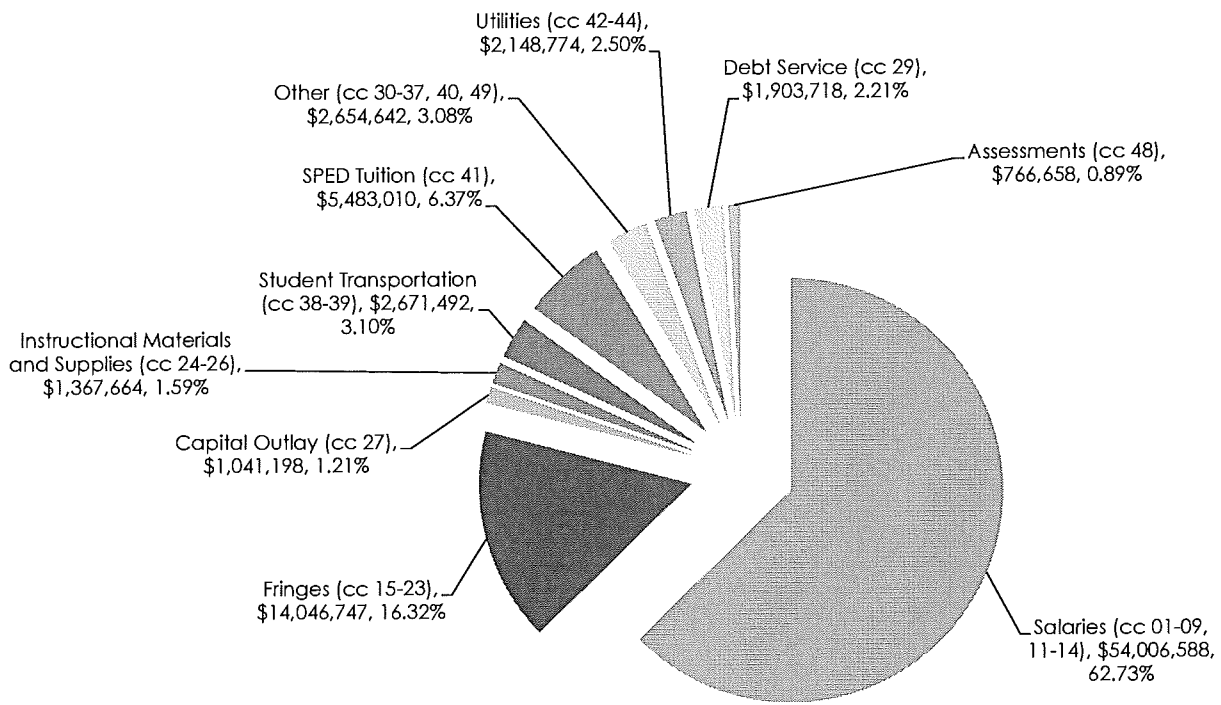
| Description | TOTAL | ACTON | BOXBOROUGH |
|---|----------------------------------|---------------------|---------------------|
| Projected Total Benefit Amount | \$1,873,119 | | |
| Base Budgets | \$68,102,867 | \$56,675,977 | \$11,426,890 |
| Benefit Percentage Shares | | 82.5% | 17.5% |
| Share of Benefits | \$1,873,119 | \$1,545,323 | \$327,796 |
| Reduce Base Budgets By Benefit Shares | \$66,229,748 | \$55,130,654 | \$11,099,094 |
| Recalculated Assessment Percentages Based On Benefit Shares Applied To Base Budget | 100.00% | 83.24% | 16.76% |
| Input Table 6 Result From FY18 Actual Budget (includes elementary debt paid by towns) | \$70,153,749 | \$59,640,651 | \$10,513,098 |
| Assessment Percentages With Actual Budget | | 85.01% | 14.99% |
| Shift In Percentage Shares | | 1.77% | -1.77% |
| Final Assessment AT FIXED ASSESSMENT % PER APPENDIX A | \$70,153,749 | \$58,397,052 | \$11,756,697 |
| LESS DEBT PAID DIRECT BY TOWN- PER IMA Section 6 | (829,912) | (666,996) | (162,916) |
| Amount due from each town | \$69,323,837 | \$57,730,056 | \$11,593,781 |
| FY17 Voted Assessments | \$67,050,245 | \$55,547,097 | \$11,503,148 |
| increase | 2,273,592 | 2,182,960 | 90,633 |
| % | 3.4% | 3.9% | 0.8% |
| | FY18 Shift: (\$1,243,599) | | |

History of Chapter 70 State Aid FY'09-FY'18



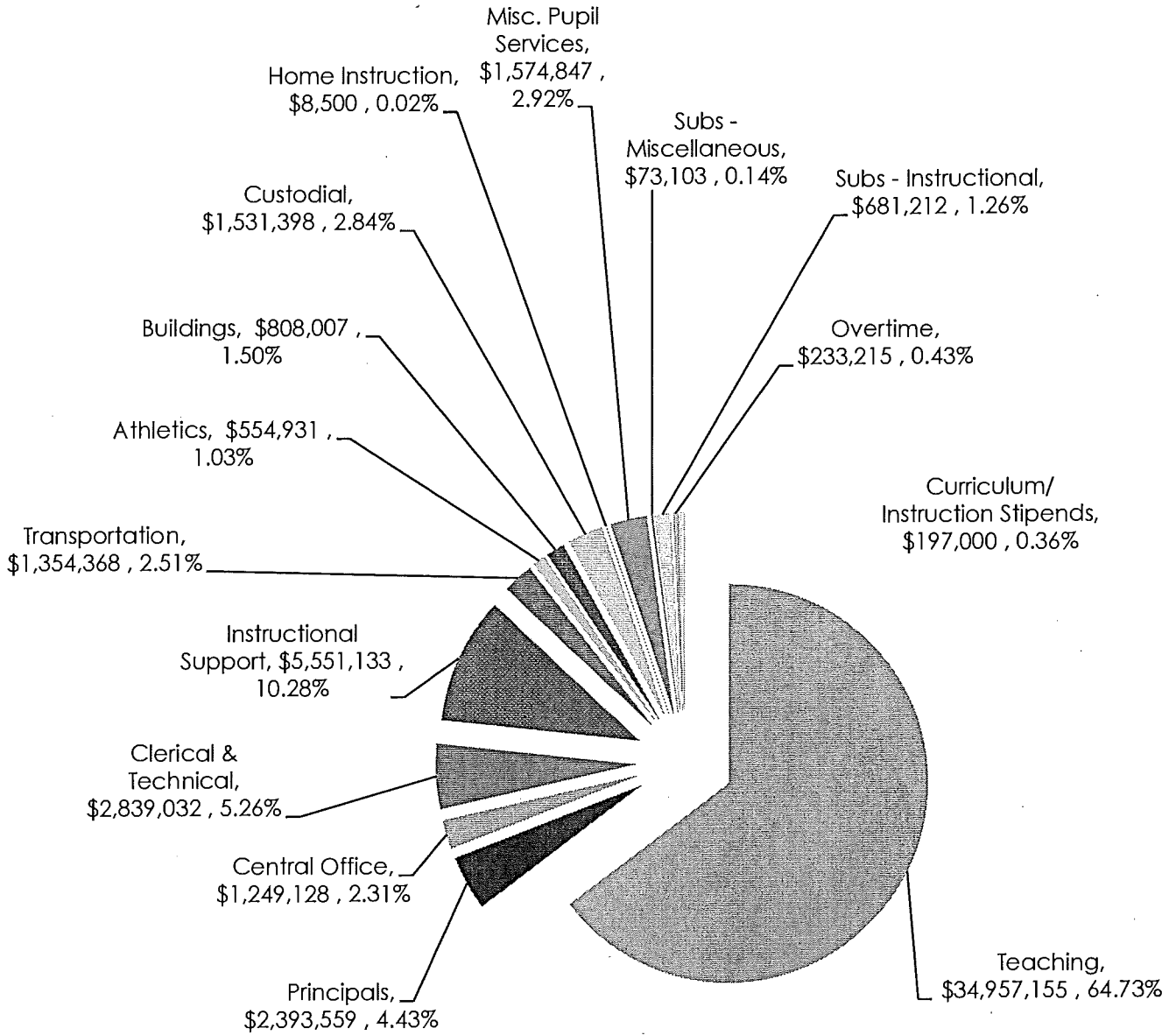
| | FY'09 | FY'10 | FY'11 | FY'12 | FY'13 | FY'14 | FY'15 | FY'16 | FY'17 | FY'18 |
|-----|-------------|-------------|-------------|-------------|-------------|-------------|--------------|--------------|--------------|--------------|
| AB | \$6,852,830 | \$6,715,773 | \$6,931,919 | \$6,969,133 | \$7,124,122 | \$7,198,422 | \$14,254,476 | \$14,393,376 | \$14,696,071 | \$14,804,931 |
| APS | \$5,228,141 | \$5,123,578 | \$5,160,527 | \$5,188,231 | \$5,537,500 | \$5,596,025 | \$0 | \$0 | \$0 | \$0 |
| BPS | \$1,394,863 | \$1,366,966 | \$1,287,108 | \$1,294,018 | \$1,310,578 | \$1,320,503 | \$0 | \$0 | \$0 | \$0 |

**Acton-Boxborough Regional School District
Budget Categories - FY '18**



Total Budget: \$86,090,491

**Acton-Boxborough Regional School District
Personnel Breakdown - FY'18 - \$54,006,588**



Comparative Data 2015-2016
Sorted by Per Pupil Expenditure Highest to Lowest
 As reported by the Massachusetts Department of Education
 Rankings are out of 314 School Districts

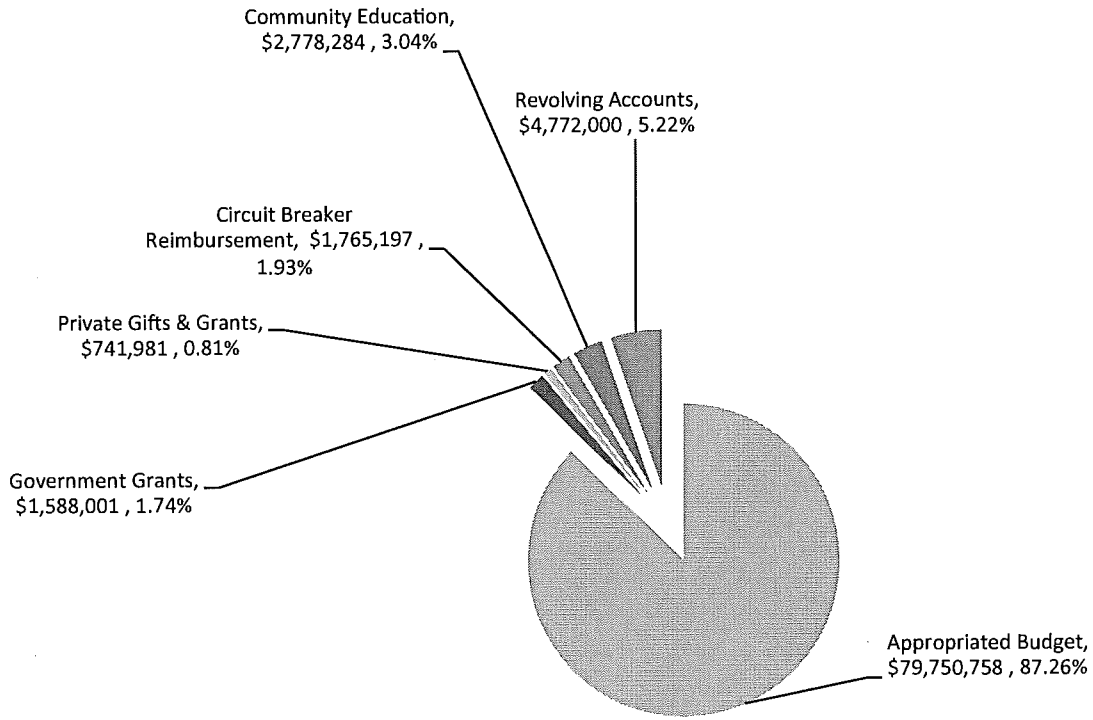
| State Ranking Per Pupil Costs | District | Enrollment | Per Pupil Costs | Student- Teacher Ratio | SAT Combined |
|----------------------------------|----------------------------------|-------------|-----------------|------------------------------|-----------------|
| #12 | Weston | 2154 | \$23,899 | 11.2 | 1834 |
| #27 | Concord-Carlisle | 1276 | \$21,585 | 13.2 | 1856 |
| #48 | Lincoln-Sudbury | 1568 | \$19,282 | 12.8 | 1759 |
| #50 | Concord | 2108 | \$19,169 | 12.9 | |
| #65 | Wellesley | 5018 | \$18,636 | 13.7 | 1813 |
| #69 | Dedham | 2693 | \$18,415 | 11.7 | 1487 |
| #97 | Needham | 5588 | \$16,547 | 14.3 | 1727 |
| #107 | Wilmington | 3391 | \$16,337 | 12.6 | 1549 |
| #111 | Harvard | 1117 | \$16,216 | 13.4 | 1766 |
| | State Average | | \$15,511 | 13.2 | |
| #140 | Sudbury | 2803 | \$15,268 | 13.8 | |
| #172 | Acton-Boxborough | 5588 | \$14,745 | 15.3 | 1863 |
| #174 | Marblehead | 3144 | \$14,710 | 12.2 | 1692 |
| #194 | Milton | 4150 | \$14,388 | 17.2 | 1609 |
| #250 | Westford | 5120 | \$13,528 | 14.3 | 1786 |
| #255 | Nashoba | 3413 | \$13,397 | 13.7 | 1654 |
| #260 | Belmont | 4466 | \$13,349 | 16.8 | 1778 |
| #263 | Winchester | 4623 | \$13,312 | 13.7 | 1790 |
| #275 | Reading | 4324 | \$13,163 | 13.9 | 1623 |
| #282 | Hingham | 4317 | \$13,010 | 14.5 | 1687 |
| #307 | Wachusett | 7298 | \$11,896 | 16.0 | 1616 |
| | Average of comparative districts | | \$16,043 | 13.9 | 1716 |

NOTES: Acton-Boxborough spends \$766 less than the state average per pupil, which is 172nd out of 314 school districts in Massachusetts.

Among 20 comparable communities, AB is 10th in per pupil spending, 1st in combined SAT scores, and has the fourth highest number of students for each certified teacher.

Total Expenditures - FY'16 Actual

Acton Boxborough Regional School District



ABRSD Total: \$91,396,221

The above chart represents total expenditures from appropriated and non-appropriated sources from the last complete fiscal year for ABRSD

**Acton-Boxborough Regional Schools
State & Federal Grant Awards - FY'16 - FY'17**

| Grant # | ABRSD Grant Description | FY16 Award Amount | FY17 Award Amount |
|---------|--|----------------------|----------------------|
| 140 | Title II Part A Teacher Quality | \$61,561 | \$59,794 |
| 180 | Title III | \$35,081 | \$37,447 |
| 240 | SPED Entitlement IDEA | \$1,187,481 | \$1,232,975 |
| 262 | Early Childhood/SPED | \$31,011 | \$31,914 |
| 274 | SPED Program Improvement | \$47,528 | \$44,528 |
| 298 | Early Childhood SPED Program Improvement | \$3,000 | \$2,250 |
| 305 | Title I | \$154,188 | \$141,495 |
| 632 | Academic Support | \$5,400 | - |
| | Essential School Health Services | <u>\$69,700</u> | <u>\$69,700</u> |
| | Total | \$1,594,950 | \$1,620,103 |

**Acton-Boxborough Regional School District
Students, Staff, Class Size**

FY15 - FY18

| <u>Grade</u> | <u>Number of Students</u> | | | <u>Projected</u> |
|---|---------------------------|--------------|--------------|------------------|
| | <u>14-15</u> | <u>15-16</u> | <u>16-17</u> | <u>17-18</u> |
| Preschool | 123 | 127 | 116 | 125 |
| K | 320 | 299 | 330 | 298 |
| 1 | 347 | 357 | 324 | 362 |
| 2 | 367 | 372 | 372 | 338 |
| 3 | 395 | 393 | 397 | 393 |
| 4 | 440 | 405 | 412 | 406 |
| 5 | 440 | 443 | 414 | 417 |
| 6 | 436 | 453 | 466 | 425 |
| Other K-6 | <u>28</u> | <u>25</u> | <u>22</u> | <u>22</u> |
| Total | 2896 | 2874 | 2853 | 2786 |
| "School Choice"/staff students included > | 51 | 50 | 60 | 56 |
| 7 | 428 | 445 | 469 | 473 |
| 8 | 479 | 443 | 442 | 476 |
| Other 7-8 | <u>17</u> | <u>10</u> | <u>16</u> | <u>16</u> |
| Totals | 924 | 898 | 927 | 965 |
| "School Choice"/staff students included > | 12 | 11 | 9 | 15 |
| 9 | 457 | 489 | 448 | 443 |
| 10 | 479 | 457 | 492 | 449 |
| 11 | 486 | 483 | 457 | 495 |
| 12 | 483 | 480 | 470 | 449 |
| Other 9-12 | <u>50</u> | <u>56</u> | <u>54</u> | <u>54</u> |
| Totals | 1955 | 1965 | 1921 | 1890 |
| "School Choice"/staff students included > | 32 | 32 | 35 | 33 |
| | 5775 | 5737 | 5701 | 5641 |

**Acton-Boxborough Regional School District
Students, Staff, Class Size (Continued)**

Number of Certified Staff

| | | | | <u>Projected</u> |
|---|--------------|--------------|--------------|------------------|
| <u>Grade</u> | <u>14-15</u> | <u>15-16</u> | <u>16-17</u> | <u>17-18</u> |
| PreK-6 | 216.46 | 216.82 | 223.93 | 229.18 |
| JH | 73.80 | 74.80 | 77.00 | 77.40 |
| HS | 152.75 | 153.75 | 156.20 | 157.20 |
| System Wide | <u>8.00</u> | <u>8.00</u> | <u>8.00</u> | <u>8.00</u> |
| Totals | 451.01 | 453.37 | 465.13 | 471.78 |
| <i>Funded by "school choice" included</i> | 4.8 FTE | 5 FTE | 4 FTE | 3 FTE |

Number of Non-Certified Staff

| | | | | <u>Projected</u> |
|--------------|--------------|--------------|--------------|------------------|
| <u>Grade</u> | <u>14-15</u> | <u>15-16</u> | <u>16-17</u> | <u>17-18</u> |
| PreK-6 | 139.92 | 145.71 | 144.80 | 143.90 |
| JH | 22.26 | 21.46 | 21.96 | 20.96 |
| HS | 42.30 | 42.40 | 42.50 | 42.50 |
| System Wide | <u>79.05</u> | <u>78.86</u> | <u>79.86</u> | <u>80.38</u> |
| | 283.53 | 288.43 | 289.12 | 287.74 |

Class Size Information*

| Class Size Average | <u>14-15</u> | <u>15-16</u> | <u>16-17</u> |
|---------------------------|--------------|--------------|--------------|
| Elementary | 22.50 | 22.50 | 22.44 |
| JH | 21.96 | 20.97 | 21.73 |
| HS | 21.30 | 21.23 | 21.00 |

| Class Size Range | | | |
|-------------------------|----------|----------|----------|
| Elementary | 18 to 25 | 17 to 25 | 14 to 25 |
| JH | 13 to 31 | 13 to 31 | 10 to 28 |
| HS | 2 to 61 | 2 to 47 | 3 to 45 |

Number of Classes Below 20/Above 25

| | | | |
|------------|--------|--------|--------|
| Elementary | 7/0 | 14/0 | 14/0 |
| JH | 36/18 | 46/9 | 35/7 |
| HS | 146/71 | 144/83 | 159/69 |

* Class size information for 17-18 can only be determined once students are assigned

School Highlights

Blanchard

- The PTF partnered with Gamewright Games to host Family Game Night on February 2. Many students were game 'gurus' and helped to teach students, staff and families how to play games.
- Early Childhood students enjoyed a Family Gathering and World Read Aloud Day events.
- Kindergarten celebrated the 100th day of school by recalling everything they have learned together this year.
- Grade 1 traced shadows in chalk early on Groundhog Day and observed changes in the earth rotation around the sun.
- Grade 2 collaborated on a sound day in the Science Lab and explored sound through experimentation.
- Grade 3 Magnets Investigation culminated in examining the Engineering Design process and creating mini Maglev (Magnetic Levitation) Transportation Systems.
- Grade 4 practiced Estimating, Sorting, Tallying, Counting & Graphing with their cross-grade Kindergarten STAR buddies.
- Grade 5 students explored the trails around Blanchard by snowshoe on February 14.
- Grade 6 students researched various causes and issues and created 'Stand Up For' projects, which they presented to attendees on February 14.

Conant

- Community service projects included valentines for the elderly, a food drive for Acton Food Pantry, school supplies for India collection, a toy drive for Toys for Tots, and "Pennies for Pediatrics," which benefits Emerson Hospital.
- Conant PTO hosted visiting authors Scott Magoon and Rob Buyea.
- The PTO brought in several enrichment activities and helped many family events for the entire school.
- Conant hosted its first evening art show for all grades to showcase their work.
- Sixth graders attended Sargent Camp, an outdoor adventure/learning experience.
- Nature Walks continued for all grades.
- The 35th Annual Craft Fair was a great success.

Douglas

The Douglas School uses "Exhibitionary Learning" to showcase student skills and concept mastery. This year:

- Kindergartners produced "Recycled" sculptures.
- 1st graders produced family histories, digital self narratives, and taught families how to dress for the weather.
- 2nd graders produced Reader's Theater plays, taught about mindsets and SMART goals.
- 3rd graders explored insects and produced art, poetry and insect life videos.
- 4th graders explored mindsets, plastic bags and land forms.
- 5th graders wrote about and took on the roles of colonial Americans - challenging parents to find out as much as they could about April, 1775.
- 6th graders performed Little Red Robin Hood. They also explored what it meant to be an ancient Egyptian and recreated ancient Egypt in the cafetorium.
- The entire community is working to empower girls in Tanzania by raising funds to build a school.

Gates

- The Gates Green Team has been promoting recycling and conserving energy at the school.
- Celebrate the Arts Night! Over 2,000 pieces of student artwork on display with an instrument museum and chorus performance.

- Community Service projects include Gates Giving Trees, Acton Food Pantry Food Drive, Valentines for Veterans, and Household Goods Recycling Ministry Towel Drive
- Winter chorus, band concerts and monthly All School Assemblies
- Kindergarten Medieval Feast
- Week-long Harry Potter celebration in the Gates library
- PTO-sponsored events: Fall Family Social, Dances of the World, Ice Cream Social, Nature Walks, and Activity Day
- Girls on the Run participate in a fall and spring 5K run!

McCarthy-Towne

- A Project School of the Reading and Writing Project through Teachers College, Columbia College
- Workshop model utilized throughout the grades
- Art Integration, Grades K-6
- Fifth Grade overnight to Merrowvista – Leadership and Teamwork
- Sixth Grade day trip to Thompson Island – Leadership and Teamwork
- Sixth Grade rotates for subject area instruction
- Responsive Classroom school
- Musical Performances include two annual Chorus concerts and two annual Band concerts
- Community Service projects include Trick-or-Treat for UNICEF, Spoons Project for Project Bread, Acton Food Pantry food drive, Stink Week for Decibels Foundation
- TCM: *Together C.A.S.E. (Concord Area Special Education Collaborative) and McCarthy-Towne*
- Parent Involvement Coordinator as part of the PTSO (Parent Teacher Student Organization)

Merriam

- Student-led conferences were held in all grades.
- Seventh annual Staff/PTO basketball game and the Merriam Fall Fair were both huge successes.
- Annual Literacy Week Celebration included “Storybook Character Dress-up Day” and a family literacy evening.
- “Gratitude” was our theme for the year and students participated in multiple events around this topic.
- Sixth graders performed portions of their musical on Kindergarten Night.
- Literacy coaches/consultants Kathy Collins and Sue Bober did wonderful work with our faculty.

R. J. Grey Junior High

- At the beginning of this year, RJ Grey adopted the ALICE protocol to enhance the school’s safety practices. Training was provided for all staff and students in the Fall.
- This year the String Ensemble program was introduced as part of the District’s Performing Arts program. 7th and 8th grade students, along with High School students, are participating in the inaugural year of this addition to the curriculum.
- We have introduced a new community service recognition program, “Rise to the Challenge,” that encourages students to engage in service activities within the community. Students who log at least 10 hours of service receive a letter and a *Rise to the Challenge* bracelet for their participation.
- New and returning student clubs include *Common Ground, Fit Club, Yoga Club, Iron Chef, Origami, and Take Action*
- Our theatre program included a fall presentation of the musical, *Once Upon a Mattress*
- Dr. Kirsty Kerin, sleep researcher and expert in the science of sleep, spoke again to the students and staff about the science of sleep, and its connection to our overall health and wellness.
- Dr. Denise Pope, from Challenge Success at Stanford University, spoke to staff and families in November about our District’s new efforts to explore and expand definitions of success for our students

- “Everyday Leader” student recognition continues with lunches with Principal Shen for 7th and 8th graders selected by staff
- “Poetry Fridays” program continues with a bi-monthly poetry reading during morning announcements by students and staff

Acton Boxborough Regional High School

- The 17th annual Community Service Awards Night was held on January 11, 2017 and 765 students were recognized for volunteering a total of 77,000 hours during 2016.
- Eighteen seniors were named semifinalists in the National Merit Scholarship Program; 16 became finalists and sixty-five other students were named Commended Students.
- As part of the Career Education Program, more than 40 students have completed job shadowing experiences, most taking part in National Job Shadow Day on February 2, 2017. A record 160 seniors have applied for the Senior Internship program. And two of three Career Speaker days have brought 20+ speakers to address over 120 students interested in exploring varying career paths.
- A-B’s Quiz Bowl Team qualified for WGBH’s High School Quiz Show. The Team earned a spot in the National Quiz Team Tournament in Atlanta, Georgia.
- Four students received Gold Keys in the annual Boston Globe Scholastics Art Awards competition. Portfolio art students participated in the annual Creeley Foundation Broadside Project. Visual Arts students took part in the following exhibits: “Elections” at the Acton Library; the Youth Art Month Shows at the Worcester Art Museum and at the State Transportation Building, Boston; “Places” at the Sargent Memorial Library, Boxborough; “Students Make Their Mark” at the Acton Senior Center.
- The Performing Arts Department held a number of successful performances. The Band was accepted to march in the Citrus Parade in Orlando, FL next December 2017. The Chamber Choir has been selected to perform at the MA Music Educators conference this March. We had 12 student musicians accepted to the MMEA Eastern District Music Festival; 4 of these students were also accepted to the MMEA All-State Music Festival.
- Proscenium Circus produced the musical “Mary Poppins” with 140 students from across the district. Over 5,000 people attended the 7 shows, and 3 were completely sold out. In January, we held the 2nd annual 24-Hour Play Festival, where English and History teachers volunteered as coaches for this event, as each play had to be based on their grade’s social sciences curriculum. PC students were featured in the February issue of the national magazine *Dramatics* in an article about community and casting. In February, PC produced 2 one-acts from the Pulitzer Prize-winning drama “The Kentucky Cycle.” We hosted Concord-Carlisle for a joint one-act performance, and will host 7 schools for the preliminary round of the Massachusetts Educational Theatre Guild on March 4. PC will also enter the International Thespian Society festival in both one-act and individual events. The PC season will finish with the spring play, “The Three Musketeers.”
- In early February, students in the Mandarin classes shared Chinese New Year celebrations with the ABRHS community and this March all World Language classes will host a World Languages Week full of activities to include a school-wide performance by Inca Son. This April, French students will travel to Quebec.
- The AB Speech and Debate Team will compete at over 20 local and national level tournaments this school year in over sixteen different events. The 2015-16 team members were named to the National Speech and Debate Association’s 200 Club (top 8% of member schools in degrees earned) for the first time in our team’s history, besting last year’s 100 Club designation. Seven students have qualified and will travel to National Championships this May in Louisville, KY, representing our school in Congress, Lincoln Douglas Debate, Extemporaneous Speaking and Public Forum Debate. Three AB students have earned the designation of Academic All American from the National Speech and Debate League for their combination of achievements in forensics and academics.

Central Administration

Dr. Glenn A. Brand, Superintendent
Marie Altieri, Deputy Superintendent
Dawn Bentley, Assistant Superintendent for Student Services
Deborah Bookis, Assistant Superintendent for Teaching and Learning
Erin Bettez, Director of Community Education
Amy Bisiewicz, Director of Educational Technology
J.D. Head, Director of Facilities and Transportation
Clare Jeannotte, Director of Finance

School Administration

JoAnn Campbell, Principal, AB Regional High School
Andrew Shen, Principal, R.J. Grey Junior High School
Dana F. Labb, Principal, Blanchard School
Damian J. Sugrue, Principal, Conant School
Christopher Whitbeck, Principal, Douglas School
Lynne Newman, Principal, Gates School
David Krane, Principal, McCarthy-Towne School
Edward Kaufman, Principal, Merriam School

NOTICE OF NONDISCRIMINATION

The Acton-Boxborough Regional School District does not discriminate on the basis of race, color, sex, sexual orientation, gender identity, religion, disability, age, active military/veteran status, ancestry, or national or ethnic origin in the administration of its educational policies, employment policies, and other administered programs and activities. In addition, students who are homeless or of limited English-speaking ability are protected from discrimination in accessing the course of study and other opportunities available through the schools.

Any person having inquiries or complaints concerning the Acton-Boxborough Regional School District's compliance with Title VI, Title IX, Section 504, ADA or MGL ch. 76, sec.5 is directed to contact the Assistant Superintendent for Student Services, Administration Building, 15 Charter Road, Acton, MA, telephone number 978-264-4700, x3265, who has been designated by the Acton-Boxborough Regional School District to coordinate the District's efforts to comply with these laws, or write to the Office for Civil Rights, J. F. Kennedy Federal Building, Room 1875, Boston, MA 02203, or the Massachusetts Department of Elementary and Secondary Education, Office of Program Quality Assurance Services, 75 Pleasant Street, Malden, MA 02148.



Acton-Boxborough Regional School District

Our Vision

To provide high-quality educational opportunities that inspire a community of learners.

Our Values

- **Wellness:** We partner with families to prioritize social emotional wellness, which is necessary for learning and developing resilience.
- **Equity:** We ensure all students have equitable access to programs and curricula to reach their potential
- **Engagement:** We provide engaging educational opportunities where students develop passion and joy for learning

Our Mission

To develop engaged, well-balanced learners through collaborative, caring relationships.

Would you like to go to Acton Town Meeting but cannot find a sitter?

Bring your school-aged kids with you and let them enjoy a

KID FRIENDLY MOVIE NIGHT

while you attend Acton Town Meeting

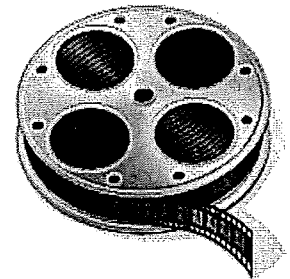
Monday (4/3) **and** Tuesday (4/4)

6:30 pm until 9:00 pm

Lower Gym at the AB Regional High School

Sing! (Monday) and Moana (Tuesday)

- ◆ Parents need to RSVP to Alycen Nigro (alyheels@yahoo.com) by **Monday (4/3) at noon** indicating the nights and spots needed.
- ◆ A release waiver will be required for each child. This waiver will be emailed to you when you reserve your spot and should be presented to the chaperones upon drop off.
- ◆ Drop off starts at 6:30 pm. Pick up is promptly at 9 PM.
- ◆ The children will be chaperoned by adult volunteers (all CORI checked) including school district teachers and parents. In addition, high school volunteers will be on hand to help out.
- ◆ Coloring activities will also be available for the children's use in the gym.
- ◆ Food will not be served but children are welcome to bring a water bottle.
- ◆ Blankets are encouraged for comfy movie watching!



For questions or to reserve a spot, contact: Alycen Nigro (alyheels@yahoo.com)

This event is sponsored by the Town of Acton, the Acton Boxborough Regional School District (ABRSD), the League of Women Voters (LWV), the Acton Boxborough Education Association (ABEA) and the local ABRSD Parent Teacher Organizations (PTOs).

You're invited to the 2017 Chair Ceremony

The Acton-Boxborough Regional Schools and the Acton-Boxborough Education Association cordially invite you to attend a reception to honor the following staff who have given service to the Acton-Boxborough Regional Schools for twenty years.

Bernice Higdon
Noreen Cohen
David Gorman
Ned Gallant*
Anna Pierce*
Scott Biron*
David Green
Kelli Carter
Elizabeth Peatman*
Nancy McGurl*
Amy Houle
Cheryl Breslin
Kathleen Clifford
LeeAnn Tyler*
Robin Crown*
Elise Simeone
Cindy Mate

**unable to attend*

Wednesday, March 22, 2017 at 4:30 p.m.
\$20.00 - Cash Bar

Westford Regency Hotel
219 Littleton Road
Westford, MA 01886

Please RSVP by March 4, 2017

***Please make checks payable to the Acton Boxborough Education Association
and interoffice them to Melissa Hayes at Conant School.***

ACTON BOXBOROUGH REGIONAL SCHOOL DISTRICT
SPECIAL REVENUE, REVOLVING, AND GIFT FUNDS
2/28/2017

| Operating | | Fund Balance 7/1/2016 | Fund Balance Transfers | Receipts | Expenses | CASH BAL | Encumber | Balance as of 2/28/17 |
|---------------------------------------|---------------------------------|--------------------------|---------------------------|--------------|--------------|--------------|------------|--------------------------|
| LUNCH | | | | | | | | |
| K Nelson | 3201 LUNCH | 805,700.12 | 0.00 | 1,083,579.87 | 1,041,775.88 | 847,504.11 | 695,848.02 | 151,656.09 |
| SUPERINTENDENT | | | | | | | | |
| G Brand | 3311 SUPERINTENDENT GIFTS | 256.00 | | 50.00 | 0.00 | 306.00 | 0.00 | 306.00 |
| DISTRICTWIDE | | | | | | | | |
| G Brand | 3353 DISTRICT WIDE GIFTS | 1,669.47 | | 0.00 | 1,669.47 | 0.00 | 0.00 | 0.00 |
| CURRICULUM | | | | | | | | |
| D Bookis | 3318 PARENT INVOLVEMENT PROJECT | 17,823.12 | | 953.00 | 3,970.06 | 14,806.06 | 0.00 | 14,806.06 |
| D Bookis | 3323 CURRICULUM GIFT | 2,079.51 | 0.00 | 1,325.00 | 647.70 | 2,756.81 | 2,700.00 | 56.81 |
| D Bookis | 3419 SCHOOL TO BUSINESS | (150.00) | | 150.00 | 0.00 | 0.00 | 0.00 | 0.00 |
| FINANCE | | | | | | | | |
| C Jeannotte | 3401 SCHOOL CHOICE | 115,691.18 | | 136,790.00 | 133,712.55 | 118,768.63 | 128,262.45 | (9,493.82) |
| Marie Altieri | 3406 ADK | 96,525.00 | 122,176.90 | 696,088.30 | 429,210.21 | 485,579.99 | 363,572.87 | 122,007.12 |
| C Jeannotte | 3016 CIRCUIT BREAKER | 998,826.00 | | 1,304,882.00 | 1,363,500.00 | 940,208.00 | 0.00 | 940,208.00 |
| C Jeannotte | 3501 INSURANCE REIMB | 17,162.43 | | 7,056.15 | 2,954.11 | 21,264.47 | 0.00 | 21,264.47 |
| M. Dennehy | 9901 TAILINGS | 20,423.63 | | 0.00 | 20,423.63 | 0.00 | | 0.00 |
| FACILITIES | | | | | | | | |
| J D Head | 3322 ELM ST HOOPS | 1,214.00 | | 0.00 | 0.00 | 1,214.00 | 0.00 | 1,214.00 |
| J D Head | 3328 NSTAR POWER DOWN PROJECT | 10,535.88 | | 0.00 | 0.00 | 10,535.88 | 0.00 | 10,535.88 |
| J D Head | 3329 FRIENDS OF LOWER FIELDS | 43,851.83 | | 0.00 | 10,747.25 | 33,104.58 | 0.00 | 33,104.58 |
| J D Head | 3330 LOWER FIELDS GIFT 2 | 0.00 | | 0.00 | 0.00 | 0.00 | 0.00 | 0.00 |
| J D Head | 3342 WEST ACTON BOARDWALK | 11,072.50 | | 0.00 | 0.00 | 11,072.50 | 0.00 | 11,072.50 |
| TBD | 3418 TRANSPORTATION | 0.00 | | 5,556.90 | 4,303.52 | 1,253.38 | 0.00 | 1,253.38 |
| J D Head | 3332 DAMON PLAYGROUND | 439.42 | | 0.00 | 0.00 | 439.42 | 0.00 | 439.42 |
| COMMUNITY EDUCATION | | | | | | | | |
| E Bettez | 3402 COMMUNITY ED | 889,649.65 | (196,292.15) | 1,688,683.78 | 1,295,746.14 | 1,086,295.14 | 370,322.64 | 715,972.50 |
| E Bettez | 3403 USE OF FACILITIES | 0.00 | | 132,225.16 | 221,098.10 | (88,872.94) | 101,198.11 | (190,071.05) |
| E Bettez | 3404 DRIVERS' ED | 243,505.49 | 0.00 | 116,726.88 | 140,746.00 | 219,486.37 | 25,202.05 | 194,284.32 |
| PUPIL SERVICES/SPED | | | | | | | | |
| M Emmons | 3428 ODP REVOLVING | 67,865.12 | | 41,905.00 | 33,878.31 | 75,891.81 | 15,899.79 | 59,992.02 |
| J Gibowitz | 3429 AD INTEGRATED PRESCHOOL | 115,085.45 | | 201,296.80 | 116,175.26 | 200,206.99 | 81,313.78 | 118,893.21 |
| 3326 MCC BIG YELLOW SCHOOL BUS | | | | | | | | |
| J Campbell | SENIOR HIGH | 205.14 | | \$0.00 | \$0.00 | 205.14 | 0.00 | 205.14 |
| A Shen | JUNIOR HIGH | 0.00 | | \$0.00 | \$0.00 | 0.00 | 0.00 | 0.00 |
| D Labb | BLANCHARD | 0.00 | | \$0.00 | \$0.00 | 0.00 | 0.00 | 0.00 |
| D Sugrue | CONANT | 650.00 | | \$200.00 | \$0.00 | 850.00 | 0.00 | 850.00 |
| C Whitbeck | DOUGLAS | 278.75 | | \$0.00 | \$0.00 | 278.75 | | 278.75 |
| L Newman | GATES | 104.30 | | \$200.00 | \$0.00 | 304.30 | 0.00 | 304.30 |
| D Krane | MCCARTHY TOWNE | 0.00 | | \$200.00 | \$0.00 | 200.00 | 0.00 | 200.00 |
| E Kaufman | MERRIAM | 671.00 | | \$0.00 | \$0.00 | 671.00 | | 671.00 |

**ACTON BOXBOROUGH REGIONAL SCHOOL DISTRICT
SPECIAL REVENUE, REVOLVING, AND GIFT FUNDS
2/28/2017**

| Operating | | Fund Balance 7/1/2016 | Fund Balance Transfers | Receipts | Expenses | CASH BAL | Encumber | Balance as of 2/28/17 |
|------------|----------------------------------|--------------------------|---------------------------|------------|------------|------------|-----------|--------------------------|
| | 3416 LIBRARY REVOLVING | | | | | | | |
| J Campbell | SENIOR HIGH | 3,580.54 | | 3,700.00 | 2,166.27 | 5,114.27 | 33.93 | 5,080.34 |
| A Shen | JUNIOR HIGH | 5,391.80 | | 2,000.00 | 1,662.66 | 5,729.14 | 1,139.47 | 4,589.67 |
| D Labb | BLANCHARD | 2,253.57 | | 1,750.00 | 0.00 | 4,003.57 | 0.00 | 4,003.57 |
| D Sugrue | CONANT | 1,524.96 | | 1,950.00 | 0.00 | 3,474.96 | 0.00 | 3,474.96 |
| C Whitbeck | DOUGLAS | 1,108.07 | | 1,750.00 | 0.00 | 2,858.07 | 0.00 | 2,858.07 |
| L Newman | GATES | 3,825.70 | | 1,764.95 | 1,439.60 | 4,151.05 | 0.00 | 4,151.05 |
| D Krane | MCCARTHY TOWNE | 841.50 | | 1,750.00 | 798.14 | 1,793.36 | 186.40 | 1,606.96 |
| E Kaufman | MERRIAM | 819.89 | | 1,750.00 | 155.99 | 2,413.90 | 0.00 | 2,413.90 |
| | SENIOR HIGH | | | | | | | |
| S Desy | 3301 ATHLETIC GIFTS | 3,000.00 | | 0.00 | 0.00 | 3,000.00 | 0.00 | 3,000.00 |
| S Desy | 3303 ABSAF:SH ATHLETICS | 50,000.00 | | 0.00 | 0.00 | 50,000.00 | 0.00 | 50,000.00 |
| S Desy | 3405 ATHLETIC REVG | 0.00 | 0.00 | 317,179.58 | 262,557.84 | 54,621.74 | 1,693.36 | 52,928.38 |
| M Hickey | 3302 ABSAF:SH PERFORMING ARTS | 9,282.22 | | 0.00 | 0.00 | 9,282.22 | 0.00 | 9,282.22 |
| J Campbell | 3306 SENIOR HIGH GIFTS | 8,530.97 | | 331.78 | 0.00 | 8,862.75 | 0.00 | 8,862.75 |
| J Campbell | 3308 SH GIFT:PTSO | 5,523.85 | | 7,750.00 | 4,620.07 | 8,653.78 | 2,150.00 | 6,503.78 |
| J Campbell | 3309 SH GIFT:OTHER | 11,519.29 | | 92.63 | 690.92 | 10,921.00 | 1,278.61 | 9,642.39 |
| J Campbell | 3313 ABSAF:SH EXTRACURRICULAR | 22,697.90 | | 51.80 | 8,200.35 | 14,549.35 | 1,750.00 | 12,799.35 |
| J Campbell | 3315 UNITED WAY GIFT | 994.95 | | 0.00 | 0.00 | 994.95 | 0.00 | 994.95 |
| J Campbell | 3319 SH: COMMUNITY SERVICE GIFTS | 4,372.84 | | 3,472.72 | 2,149.60 | 5,695.96 | 0.00 | 5,695.96 |
| J Campbell | 3320 SH: SPECTRUM | 98.77 | | 0.00 | 0.00 | 98.77 | 0.00 | 98.77 |
| J Campbell | 3321 AB FRIENDS OF DRAMA | 25.00 | | 0.00 | 0.00 | 25.00 | 0.00 | 25.00 |
| J Campbell | 3412 LOST BOOKS-SENIOR HIGH | 30,411.72 | | 674.00 | 248.97 | 30,836.75 | 0.00 | 30,836.75 |
| J Campbell | 3413 PARKING-SENIOR HIGH | 6,315.57 | | 50,510.00 | 31,978.26 | 24,847.31 | 23,332.44 | 1,514.87 |
| J Campbell | 3414 SUMMER SCHOOL TUITION | 171,127.50 | | 6,454.80 | 96,365.77 | 81,216.53 | 4,655.22 | 76,561.31 |
| M Hickey | 3415 PERFORMING ARTS REV | 3,059.20 | | 26,782.18 | 21,808.42 | 8,032.96 | 5,026.65 | 3,006.31 |
| J Campbell | 3420 EMPORIUM REVOLVING | 9,211.17 | | 44,778.01 | 38,301.60 | 15,687.58 | 3,472.22 | 12,215.36 |
| J Campbell | 3423 SH: PROSCENIUM CIRCUS | 29,990.54 | 0.00 | 71,683.00 | 46,495.13 | 55,178.41 | 512.36 | 54,666.05 |
| J Campbell | 3424 SH:COUNSELING/TESTING | 17,633.12 | | 117,141.25 | 19,841.43 | 114,932.94 | 2,176.77 | 112,756.17 |
| J Campbell | 3425 SH CHORUS | 8,541.14 | 0.00 | 17,384.00 | 9,678.19 | 16,246.95 | 1,468.68 | 14,778.27 |
| | JUNIOR HIGH | | | | | | | |
| A Shen | 3305 JUNIOR HIGH GIFTS | 14,217.19 | | 6,492.30 | 6,136.12 | 14,573.37 | 0.00 | 14,573.37 |
| A Shen | 3312 ABSAF:JH EXTRACURRICULAR | 6,010.58 | 0.00 | 0.00 | 0.00 | 6,010.58 | 400.00 | 5,610.58 |
| A Shen | 3314 JOHN LORING MEMORIAL GIFT | 2,125.35 | | 3.56 | 0.00 | 2,128.91 | 2,125.50 | 3.41 |
| A Shen | 3317 EDFAAB GIFT - JH | 274.38 | | 0.00 | 0.00 | 274.38 | 0.00 | 274.38 |
| A Shen | 3327 DRAGONFLY THEATER | 27,119.14 | | 1,100.00 | 11,929.28 | 16,289.86 | 1,142.82 | 15,147.04 |
| A Shen | 3411 LOST BOOKS-JUNIOR HIGH | 7,986.80 | | 0.00 | 1,730.82 | 6,255.98 | 0.00 | 6,255.98 |
| A Shen | 3421 JH STORE REVOLVING | 1,370.89 | | 10,986.00 | 10,802.95 | 1,553.94 | 0.00 | 1,553.94 |
| A Shen | 3422 JH THEATER REVOLVING | 4,444.87 | 0.00 | 23,813.05 | 20,450.98 | 7,806.94 | 0.00 | 7,806.94 |
| | BLANCHARD | | | | | | | |
| D Labb | 3348 BLANCHARD GIFTS | 11,014.69 | | 5,000.00 | 3,138.00 | 12,876.69 | 0.00 | 12,876.69 |
| D Labb | 3408 BLANCHARD AM/PM XD | 166,528.04 | | 176,464.04 | 183,558.73 | 159,433.35 | 62,682.42 | 96,750.93 |

**ACTON BOXBOROUGH REGIONAL SCHOOL DISTRICT
SPECIAL REVENUE, REVOLVING, AND GIFT FUNDS
2/28/2017**

| Operating | | Fund Balance 7/1/2016 | Fund Balance Transfers | Receipts | Expenses | CASH BAL | Encumber | Balance as of 2/28/17 |
|--|-----------------------------|--------------------------|---------------------------|---------------------|---------------------|---------------------|---------------------|--------------------------|
| CONANT | | | | | | | | |
| D Sugrue | 3334 CONANT PTO | 3,937.49 | | 7,021.51 | 12,660.87 | (1,701.87) | 13,471.25 | (15,173.12) |
| D Sugrue | 3343 CONANT ENRICHMENT GIFT | 73,934.46 | 24,597.70 | 0.00 | 0.00 | 98,532.16 | 0.00 | 98,532.16 |
| D Sugrue | 3349 CONANT GIFTS | 1,390.70 | | 0.00 | 0.00 | 1,390.70 | 0.00 | 1,390.70 |
| DOUGLAS | | | | | | | | |
| C Whitbeck | 3335 DOUGLAS PTO | 2,179.12 | | 10,870.88 | 20,647.37 | (7,597.37) | 11,834.24 | (19,431.61) |
| C Whitbeck | 3350 DOUGLAS GIFTS | 701.74 | | 0.00 | 0.00 | 701.74 | 0.00 | 701.74 |
| C Whitbeck | 3409 DOUG: DAWN/DUSK | 64,862.41 | | 214,186.62 | 179,512.98 | 99,536.05 | 75,856.54 | 23,679.51 |
| GATES | | | | | | | | |
| L Newman | 3336 GATES PTO | 6,211.57 | | 8,334.00 | 17,094.16 | (2,548.59) | 13,845.58 | (16,394.17) |
| L Newman | 3339 GATES GIFTS | 14,260.28 | | 1,689.06 | 588.10 | 15,361.24 | 0.00 | 15,361.24 |
| L Newman | 3344 GATES ENRICHMENT GIFT | 49,262.61 | 26,895.47 | 0.00 | 0.00 | 76,158.08 | 0.00 | 76,158.08 |
| MCCARTHY TOWNE | | | | | | | | |
| D Krane | 3337 MCCARTHY PTO | 12,800.26 | | 47,334.00 | 46,485.52 | 13,648.74 | 26,446.65 | (12,797.91) |
| D Krane | 3340 MCCARTHY TECHN | 0.50 | | 0.00 | 0.00 | 0.50 | 0.00 | 0.50 |
| D Krane | 3345 MCT ENRICHMENT GIFT | 64,976.48 | 22,622.08 | 0.00 | 1,652.43 | 85,946.13 | 0.00 | 85,946.13 |
| D Krane | 3351 MCCARTHY TOWNE GIFTS | 400.00 | | 0.00 | 0.00 | 400.00 | 0.00 | 400.00 |
| MERRIAM | | | | | | | | |
| E Kaufman | 3338 MERRIAM PTO | 9,831.39 | | 30,143.60 | 54,431.90 | (14,456.91) | 43,166.29 | (57,623.20) |
| E Kaufman | 3352 MERRIAM GIFTS | 62.91 | | 0.00 | 0.00 | 62.91 | 0.00 | 62.91 |
| E Kaufman | 3410 MERRIAM AM/PM | 130,447.87 | | 128,999.21 | 120,826.69 | 138,620.39 | 66,857.87 | 71,762.52 |
| Total Special Revenue and Revolving Funds | | 4,549,168.49 | 0.00 | 6,771,007.37 | 6,061,364.30 | 5,258,811.56 | 2,151,024.98 | 3,107,786.58 |

**ACTON BOXBOROUGH REGIONAL SCHOOL DISTRICT
SPECIAL REVENUE, REVOLVING, AND GIFT FUNDS
2/28/2017**

| Operating | | Fund Balance 7/1/2016 | Fund Balance Transfers | Receipts | Expenses | CASH BAL | Encumber | Balance as of 2/28/17 |
|------------|---|--------------------------|---------------------------|---------------------|---------------------|---------------------|---------------------|--------------------------|
| | SCHOLARSHIPS | | | | | | | |
| | 5001 SCH:DENNIS M KULSICK - Principal | 0.00 | | 10,000.00 | 0.00 | 10,000.00 | 0.00 | 10,000.00 |
| | 5003 SCH:A B JAMBOREE | 2,620.30 | | 19.19 | 0.00 | 2,639.49 | 0.00 | 2,639.49 |
| | 5004 SCH:KATHERINE KINSLEY | 29,346.19 | | 214.87 | 0.00 | 29,561.06 | 0.00 | 29,561.06 |
| | 5005 SCH:JAMES E KINSLEY | 37,763.85 | | 276.51 | 0.00 | 38,040.36 | 0.00 | 38,040.36 |
| | 5006 SCH:AMERICAN LEGION 284 - Principal | 34,000.00 | | | | 34,000.00 | | 34,000.00 |
| | 5006 SCH:AMERICAN LEGION 284 - Interest | 16,950.90 | | 363.43 | 2,000.00 | 15,314.33 | 0.00 | 15,314.33 |
| | 5008 SCH:J PRENDIVILLE III | 12,030.00 | | 80.82 | 1,000.00 | 11,110.82 | 0.00 | 11,110.82 |
| | 5009 SCH:M&P SMOLTEES | 23,869.44 | | 174.77 | 0.00 | 24,044.21 | 0.00 | 24,044.21 |
| | 5010 SCH:J DEBAGGIS | 2,960.18 | | 21.67 | 0.00 | 2,981.85 | 0.00 | 2,981.85 |
| | 5011 SCH:R J GREY | 13,483.22 | | 98.72 | 0.00 | 13,581.94 | 0.00 | 13,581.94 |
| | 5012 SCH:CHARLES BATTIT | 20,297.09 | | 148.62 | 0.00 | 20,445.71 | 0.00 | 20,445.71 |
| | 5013 SCH:J SCOTT | 883.00 | | 623.41 | 0.00 | 1,506.41 | 0.00 | 1,506.41 |
| | 5014 SCHOLARSHIP:GENERAL | 1,674.82 | | 4,184.34 | 0.00 | 5,859.16 | 0.00 | 5,859.16 |
| | 5015 FRED S KENNEDY SCHOLARSHIP - Principal | 1,400.00 | | | | 1,400.00 | | 1,400.00 |
| | 5015 FRED S KENNEDY SCHOLARSHIP - Interest | 404.39 | | 13.22 | 0.00 | 417.61 | 0.00 | 417.61 |
| | 5016 CHS BRUSIE MEMORIAL SCHOLARSHIP | 2,057.60 | | 4,015.07 | 0.00 | 6,072.67 | 0.00 | 6,072.67 |
| | 5017 THOMAS MEAGHER SCHOLARSHIP | 4,883.18 | | 35.75 | 0.00 | 4,918.93 | 0.00 | 4,918.93 |
| | 5018 R & E MATUSOW SCHOLARSHIP | 50,398.70 | | 369.03 | 0.00 | 50,767.73 | 0.00 | 50,767.73 |
| | 5020 SANDRA WILENSKY SCHOLARSHIP | 1,617.65 | | 11.85 | 0.00 | 1,629.50 | 0.00 | 1,629.50 |
| | 5021 FREDERICK JOYCE MEMORIAL | 2,019.38 | | 14.79 | 0.00 | 2,034.17 | 0.00 | 2,034.17 |
| | 5023 ALMA PARKHURST SCHOLARSHIP | 16,923.92 | | 123.92 | 0.00 | 17,047.84 | 0.00 | 17,047.84 |
| D Labb | 5024 P HALL SCHOLARSHIP-Principal | 10,000.00 | | | | 10,000.00 | | 10,000.00 |
| | 5024 P HALL SCHOLARSHIP-Interest | 3,199.68 | | 1,627.34 | 0.00 | 4,827.02 | 0.00 | 4,827.02 |
| | STUDENT ACTIVITIES | | | | | | | |
| A Shen | 6001 STU ACTIVITY FUND-JH | 24,267.70 | | 51,733.10 | 26,953.73 | 49,047.07 | 0.00 | 49,047.07 |
| J Campbell | 6002 STU ACTIVITY FUND-SH | 109,829.22 | | 153,687.51 | 93,909.33 | 169,607.40 | 0.00 | 169,607.40 |
| D Labb | 6003 STU ACTIVITY FUND-BL | 19,345.13 | | 26,741.85 | 9,674.80 | 36,412.18 | 0.00 | 36,412.18 |
| | Total Scholarship & Agency Funds | 442,225.54 | 0.00 | 254,579.78 | 133,537.86 | 563,267.46 | 0.00 | 563,267.46 |
| | Total All funds | 4,991,394.03 | 0.00 | 7,025,587.15 | 6,194,902.16 | 5,822,079.02 | 2,151,024.98 | 3,671,054.04 |

Acton Boxborough Regional Schools

FY'17 Grants
February 28, 2017

| | | | | FY'17 | YTD | Enc | Total | Balance |
|---|---------------------|-----------------|------------------------------------|---------------------|-------------------|-------------------|---------------------|------------------|
| | | | | Budget | | | | |
| 3001 SPED IDEA # F240 | | | | | | | | |
| FY17 | DAWN BENTLEY | | | | | | | |
| Revenue | | | | | | | | |
| 3001R17 | 45401 | 3001R17 45401 | REVENUE - FEDERAL - THRU STATE | 1,232,975.00 | 624,508.00 | 0.00 | 624,508.00 | 608,467.00 |
| Expense | | | | | | | | |
| 30011701 | 516011 | 30011701 516011 | SH F240 AIDES/PARAS - SPED | 277,355.00 | 151,315.55 | 116,707.06 | 268,022.61 | 9,332.39 |
| 30011702 | 516011 | 30011702 516011 | JH F240 AIDES/PARAS - SPED | 187,025.00 | 101,818.40 | 81,561.83 | 183,380.23 | 3,644.77 |
| 30011703 | 516011 | 30011703 516011 | BL F240 AIDES/PARAS - SPED | 122,063.00 | 65,869.39 | 53,495.41 | 119,364.80 | 2,698.20 |
| 30011704 | 516011 | 30011704 516011 | CN F240 AIDES/PARAS - SPED | 30,145.00 | 16,526.14 | 13,182.73 | 29,708.87 | 436.13 |
| 30011705 | 516011 | 30011705 516011 | DO F240 AIDES/PARAS - SPED | 9,575.00 | 5,153.43 | 4,279.49 | 9,432.92 | 142.08 |
| 30011706 | 516011 | 30011706 516011 | GA F240 AIDES/PARAS - SPED | 115,620.00 | 57,478.12 | 54,101.12 | 111,579.24 | 4,040.76 |
| 30011707 | 516011 | 30011707 516011 | MCT F240 AIDES/PARAS - SPED | 157,800.00 | 84,148.42 | 64,552.33 | 148,700.75 | 9,099.25 |
| 30011708 | 516011 | 30011708 516011 | ME F240 AIDES/PARAS - SPED | 272,763.00 | 152,574.94 | 116,243.84 | 268,818.78 | 3,944.22 |
| 30011709 | 516011 | 30011709 516011 | PRESCHOOL AIDES/PARAS - SPED | 27,405.00 | 15,108.62 | 11,903.07 | 27,011.69 | 393.31 |
| 30011710 | 515013 | 30011710 515013 | BOOKKEEPER | 33,224.00 | 0.00 | 0.00 | 0.00 | 33,224.00 |
| | 3001 | | SPED IDEA 240 | 1,232,975.00 | 649,993.01 | 516,026.88 | 1,166,019.89 | 66,955.11 |
| 3002 TITLE I # F305 | | | | | | | | |
| FY17 | DEB BOOKIS | | | | | | | |
| Revenue | | | | | | | | |
| 3002R17 | 45401 | 3002R17 45401 | REVENUE - FEDERAL - THRU STATE | 141,495.00 | 69,609.00 | 0.00 | 69,609.00 | 71,886.00 |
| Expense | | | | | | | | |
| 30021701 | 514081 | 30021701 514081 | TEACHER - GATES | 22,403.00 | 11,201.45 | 11,201.41 | 22,402.86 | 0.14 |
| 30021702 | 514081 | 30021702 514081 | TEACHER - BLANCHARD | 21,401.00 | 10,700.56 | 10,700.52 | 21,401.08 | -0.08 |
| 30021703 | 514081 | 30021703 514081 | TEACHER - JH | 28,985.00 | 14,492.40 | 14,492.32 | 28,984.72 | 0.28 |
| 30021704 | 516001 | 30021704 516001 | JH AIDES/PARAPROFESSIONALS | 44,383.00 | 30,319.29 | 14,475.52 | 44,794.81 | -411.81 |
| 30021705 | 514002 | 30021705 514002 | ADMINISTRATOR | 5,000.00 | 2,745.06 | 1,541.79 | 4,286.85 | 713.15 |
| 30021706 | 543035 | 30021706 543035 | OTHER INSTR MATERIAL | 1,122.00 | 720.00 | 0.00 | 720.00 | 402.00 |
| 30021707 | 514700 | 30021707 514700 | PD SUBSTITUTES | 5,000.00 | 0.00 | 0.00 | 0.00 | 5,000.00 |
| 30021708 | 524009 | 30021708 524009 | CONTRACTED SERVICES | 6,200.00 | 6,200.00 | 0.00 | 6,200.00 | 0.00 |
| 30021709 | 570031 | 30021709 570031 | MASS TEACHERS RETIREMENT | 7,001.00 | 0.00 | 0.00 | 0.00 | 7,001.00 |
| | 3002 | | TITLE I | 141,495.00 | 76,378.76 | 52,411.56 | 128,790.32 | 12,704.68 |
| 3004 SPED PROGRAM IMPROVEMENT # F274 | | | | | | | | |
| FY17 | DAWN BENTLEY | | | | | | | |
| Revenue | | | | | | | | |
| 3004R17 | 45401 | 3004R17 45401 | REVENUE - FEDERAL - THRU STATE | 44,528.00 | 5,566.00 | 0.00 | 5,566.00 | 38,962.00 |
| Expense | | | | | | | | |
| 30041701 | 514900 | 30041701 514900 | STIPEND | 2,718.00 | 0.00 | 0.00 | 0.00 | 2,718.00 |
| 30041702 | 524006 | 30041702 524006 | CONF, TRAV, WORKSHOPS | 11,310.00 | 2,655.00 | 0.00 | 2,655.00 | 8,655.00 |
| 30041702 | 524134 | 30041702 524134 | SPEAKERS - SPECIAL EDUCATION | 3,500.00 | 0.00 | 0.00 | 0.00 | 3,500.00 |
| 30041702 | 524173 | 30041702 524173 | CONTR SVC - CONSULTANT | 27,000.00 | 16,876.07 | 0.00 | 16,876.07 | 10,123.93 |
| | 3004 | | SPED PROGRAM IMPROVEMENT | 44,528.00 | 19,531.07 | 0.00 | 19,531.07 | 24,996.93 |
| 3006 TITLE IIA:IMPRVG ED QUAL # F140 | | | | | | | | |
| FY17 | DEB BOOKIS | | | | | | | |
| Revenue | | | | | | | | |
| 3006R17 | 45401 | 3006R17 45401 | REVENUE - FEDERAL - THRU STATE | 59,794.00 | 37,450.00 | 0.00 | 37,450.00 | 22,344.00 |
| Expense | | | | | | | | |
| 30061701 | 514011 | 30061701 514011 | ADMINISTRATOR | 5,000.00 | 2,745.06 | 1,541.79 | 4,286.85 | 713.15 |
| 30061702 | 524112 | 30061702 524112 | PD - CURRICULUM FRAMEWORKS | 8,250.00 | 8,250.00 | 0.00 | 8,250.00 | 0.00 |
| 30061702 | 524113 | 30061702 524113 | PD - CONSULTANTS | 8,000.00 | 2,000.00 | 6,000.00 | 8,000.00 | 0.00 |
| 30061703 | 514700 | 30061703 514700 | PD SUBSTITUTES | 31,500.00 | 22,817.50 | 0.00 | 22,817.50 | 8,682.50 |
| 30061704 | 543094 | 30061704 543094 | TEXTBOOKS | 6,594.00 | 5,371.34 | 1,044.38 | 6,415.72 | 178.28 |
| 30061705 | 570031 | 30061705 570031 | MASS TEACHERS RETIREMENT | 450.00 | 0.00 | 0.00 | 0.00 | 450.00 |
| | 3006 | | TITLE IIA:IMPRVG ED QUAL | 59,794.00 | 41,183.90 | 8,586.17 | 49,770.07 | 10,023.93 |
| 3019 EARLY CHILDHOOD # F262 | | | | | | | | |
| FY17 | DAWN BENTLEY | | | | | | | |
| Revenue | | | | | | | | |
| 3019R17 | 45400 | 3019R17 45400 | REVENUE - FEDERAL - DIRECT | 31,914.00 | 12,764.80 | 0.00 | 12,764.80 | 19,149.20 |
| Expense | | | | | | | | |
| 30191701 | 516011 | 30191701 516011 | AIDES/PARAPROFESSIONALS | 31,914.00 | 13,624.69 | 16,505.37 | 30,130.06 | 1,783.94 |
| | 3019 | | EARLY CHILDHOOD # F262 | 31,914.00 | 13,624.69 | 16,505.37 | 30,130.06 | 1,783.94 |
| 3020 SPED EARLY CHILDHOOD # F298 | | | | | | | | |
| FY17 | JOE GIBOWICZ | | | | | | | |
| Revenue | | | | | | | | |
| 3020R17 | 45400 | 3020R17 45400 | REVENUE - FEDERAL - DIRECT | 2,250.00 | 0.00 | 0.00 | 0.00 | 2,250.00 |
| Expense | | | | | | | | |
| 30201701 | 524006 | 30201701 524006 | CONF, TRAV, WORKSHOPS | 2,250.00 | 0.00 | 0.00 | 0.00 | 2,250.00 |
| | 3020 | | SPED EARLY CHILDHOOD # F298 | 2,250.00 | 0.00 | 0.00 | 0.00 | 2,250.00 |

Acton Boxborough Regional Schools

FY'17 Grants

February 28, 2017

| | | | | FY'17 Budget | YTD | Enc | Total | Balance |
|---|--------|-----------------|---|------------------|------------------|------------------|------------------|------------------|
| 3021 TITLE III ELA # F180 | | | | | | | | |
| FY17 DAWN BENTLEY | | | | | | | | |
| Revenue | | | | | | | | |
| 3021R17 | 45401 | 3021R17 45401 | REVENUE - FEDERAL - THRU STATE | 37,447.00 | 3,744.00 | 0.00 | 3,744.00 | 33,703.00 |
| 3021R162 | 45401 | 3021R162 45401 | FY16 CARRYFORWARD REVENUE | 5,134.00 | 733.00 | 0.00 | 733.00 | 4,401.00 |
| Expense | | | | | | | | |
| 30211702 | 514064 | 30211702 514064 | TITLE III 180 ELA TEACHER | 20,460.00 | 0.00 | 0.00 | 0.00 | 20,460.00 |
| 30211703 | 516001 | 30211703 516001 | TITLE III 180 GRANT ELA AIDES / PARAS | 7,200.00 | 0.00 | 0.00 | 0.00 | 7,200.00 |
| 30211704 | 524009 | 30211704 524009 | TTL III 180 ELA GRANT CONTRACTED SERVICES | 2,400.00 | 0.00 | 0.00 | 0.00 | 2,400.00 |
| 30211705 | 524009 | 30211705 524009 | TTL III 180 ELA GRANT PD CONTRACTED SERVICES | 2,000.00 | 0.00 | 0.00 | 0.00 | 2,000.00 |
| 30211706 | 543035 | 30211706 543035 | TITLE III 180 ELA SUPPLIES | 452.00 | 190.59 | 47.90 | 238.49 | 213.51 |
| 30211707 | 543014 | 30211707 543014 | TITLE III 180 ELA SOFTWARE LICENSING | 2,975.00 | 0.00 | 0.00 | 0.00 | 2,975.00 |
| 30211705 | 524006 | 30211705 524006 | TITLE III 180 ELA TRAVEL | 1,960.00 | 1,960.00 | 0.00 | 1,960.00 | 0.00 |
| 30211708 | 524006 | 30211708 543035 | FY16 CARRYFORWARD TITLE III 180 ELA SUPPLIES | 2,000.00 | 0.00 | 0.00 | 0.00 | 2,000.00 |
| 30211709 | 524006 | 30211709 524006 | FY16 CARRYFORWARD TITLE III 180 ELA CONF, TRAVI | 3,134.00 | 0.00 | 0.00 | 0.00 | 3,134.00 |
| | | | | | | | 0.00 | 0.00 |
| | 3021 | | TITLE III ELA | 42,581.00 | 2,150.59 | 47.90 | 2,198.49 | 40,382.51 |
| 3101 ESSENTIAL SCHOOL HEALTH SERVICES # S290 | | | | | | | | |
| FY17 DAWN BENTLEY | | | | | | | | |
| Revenue | | | | | | | | |
| 3101R17 | 46000 | 3101R17 46000 | REVENUE - STATE | 69,700.00 | 34,850.00 | 0.00 | 34,850.00 | 34,850.00 |
| Expense | | | | | | | | |
| 31011701 | 514044 | 31011701 514044 | NURSE | 44,904.00 | 21,716.90 | 23,187.30 | 44,904.20 | -0.20 |
| 31011701 | 514705 | 31011701 514705 | NURSE, SUBSTITUTE | 11,000.00 | 5,639.20 | 0.00 | 5,639.20 | 5,360.80 |
| 31011701 | 514913 | 31011701 514913 | STIPEND - R&D | 1,200.00 | 1,200.00 | 0.00 | 1,200.00 | 0.00 |
| 31011702 | 524006 | 31011702 524006 | CONF, TRAV, WORKSHOPS | 2,800.00 | 1,560.49 | 0.00 | 1,560.49 | 1,239.51 |
| 31011702 | 524113 | 31011702 524113 | WEB CONSULTANT | 3,220.00 | 3,220.59 | 0.00 | 3,220.59 | -0.59 |
| 31011702 | 524161 | 31011702 524161 | CONTR SVCS - TECHNOLOGY | 1,000.00 | 0.00 | 0.00 | 0.00 | 1,000.00 |
| 31011703 | 543064 | 31011703 543064 | SUPPLIES - OFFICE | 800.00 | 47.90 | 549.38 | 597.28 | 202.72 |
| 31011703 | 543087 | 31011703 543087 | INSTR TECHNOLOGY | 4,776.00 | 3,171.83 | 0.00 | 3,171.83 | 1,604.17 |
| | 3101 | | ESSENTIAL SCHOOL HEALTH SVCS | 69,700.00 | 36,556.91 | 23,736.68 | 60,293.59 | 9,406.41 |
| 3103 SOLAR OATA | | | | | | | | |
| FY17 JD HEAD | | | | | | | | |
| Revenue | | | | | | | | |
| 3103R15 | 46000 | 3103R15 46000 | REVENUE - STATE | 2,000.00 | 2,000.00 | 0.00 | 2,000.00 | 0.00 |
| 3103R16 | 46000 | 3103R16 46000 | REVENUE - STATE | 10,400.00 | 5,353.99 | 0.00 | 5,353.99 | 5,046.01 |
| 3103R17 | 46000 | 3103R17 46000 | REVENUE - STATE | 100.00 | 0.00 | 0.00 | 0.00 | 100.00 |
| Expense | | | | | | | | |
| 31031501 | 524113 | 31031501 524113 | PROFESSIONAL SERVICES | 12,500.00 | 8,400.24 | 0.00 | 8,400.24 | 4,099.76 |
| | 3103 | | SOLAR OATA | 12,500.00 | 8,400.24 | 0.00 | 8,400.24 | 4,099.76 |
| 3107 MIIA | | | | | | | | |
| FY17 CLARE JEANNOTTE | | | | | | | | |
| Revenue | | | | | | | | |
| 3107R17 | 48401 | 3107R17 48401 | GRANTS - PRIVATE | 6,717.00 | | | 0.00 | 6,717.00 |
| Expense | | | | | | | | |
| 310701 | 524124 | 310701 524124 | SECURITY | 6,717.00 | 6,717.20 | | 6,717.20 | -0.20 |
| | 3106 | | MIIA | 6,717.00 | 6,717.20 | 0.00 | 6,717.20 | -0.20 |



03/09/2017 10:35
8399tblo

|ACTON / BOXBOROUGH REGIONAL SCHOOLS
|BUDGET V ACTUAL

|P 1
|glytdbud

FOR 2017 08

| | ORIGINAL APPROP | REVISED BUDGET | YTD EXPENDED | MTD EXPENDED | ENCUMBRANCES | AVAILABLE BUDGET | PCT USED |
|-------------------------|-----------------|----------------|---------------|--------------|---------------|------------------|----------|
| 01 SALARIES, TEACHING | 33,992,708 | 33,992,708.00 | 17,818,343.45 | 2,666,287.14 | 16,031,525.18 | 142,839.37 | 99.6% |
| 02 SALARIES, PRIN/A PRI | 2,237,321 | 2,237,321.00 | 1,552,662.94 | 172,562.41 | 698,964.06 | -14,306.00 | 100.6% |
| 03 SALARIES, CNTRL ADMN | 1,195,267 | 1,187,267.00 | 839,612.66 | 92,310.06 | 371,030.14 | -23,375.80 | 102.0% |
| 04 SALARIES, SUPP STAFF | 9,311,200 | 9,319,200.00 | 5,411,634.78 | 653,298.41 | 3,822,817.59 | 84,747.63 | 99.1% |
| 05 SALARIES, ATHLETICS | 531,828 | 520,850.00 | 373,807.88 | 90,245.13 | 67,683.91 | 79,358.21 | 84.8% |
| 06 SALARIES, BUILDINGS | 732,102 | 732,102.00 | 518,644.21 | 57,023.01 | 209,691.82 | 3,765.97 | 99.5% |
| 07 SALARIES, CUSTODIAL | 1,501,995 | 1,501,995.00 | 1,019,052.17 | 118,700.15 | 526,625.13 | -43,682.30 | 102.9% |
| 08 SALARIES, HOME INSTR | 8,500 | 8,500.00 | 2,300.00 | .00 | .00 | 6,200.00 | 27.1% |
| 09 SALARIES, MISC PS | 1,575,266 | 1,575,266.00 | 921,515.97 | 92,464.53 | 528,540.72 | 125,209.31 | 92.1% |
| 11 SALARIES, SUBS MISC | 66,691 | 66,691.00 | 35,449.24 | 3,647.11 | .00 | 31,241.76 | 53.2% |
| 12 SALARIES, SUBS INSTR | 677,142 | 671,642.00 | 296,970.98 | 45,444.34 | 40.38 | 374,630.64 | 44.2% |
| 13 SALARIES, OVERTIME | 232,855 | 232,855.00 | 162,517.83 | 17,003.89 | .00 | 70,337.17 | 69.8% |
| 14 STIPENDS, CURR/INSTR | 166,000 | 166,000.00 | 48,306.00 | 1,505.00 | 36,764.00 | 80,930.00 | 51.2% |
| 15 FRINGES, COURSE REIM | 56,000 | 56,000.00 | 36,290.30 | 2,624.00 | .00 | 19,709.70 | 64.8% |
| 16 FRINGES, HLTH INSUR | 8,623,581 | 8,623,581.00 | 6,703,453.63 | 804,157.77 | .00 | 1,920,127.37 | 77.7% |
| 17 FRINGES, H INSUR RET | 968,996 | 968,996.00 | 630,361.82 | 72,845.84 | .00 | 338,634.18 | 65.1% |
| 18 FRINGES, LIF/DIS INS | 40,900 | 40,900.00 | 27,306.30 | 3,230.20 | .00 | 13,593.70 | 66.8% |
| 19 FRINGES, UNEMPLMNT | 40,000 | 40,000.00 | 34,829.54 | 3,285.00 | .00 | 5,170.46 | 87.1% |
| 20 FRINGES, WORKRS COMP | 295,000 | 295,000.00 | 467,026.01 | .00 | .00 | -172,026.01 | 158.3% |
| 21 FRINGES, MCRS | 2,086,065 | 2,086,065.00 | 2,086,065.00 | .00 | .00 | .00 | 100.0% |
| 22 FRINGES, MEDICARE | 825,000 | 825,000.00 | 476,889.83 | 59,251.52 | .00 | 348,110.17 | 57.8% |
| 23 CONTRIB OPEB TRUST F | 800,000 | 800,000.00 | 400,000.00 | .00 | .00 | 400,000.00 | 50.0% |
| 24 INSTRUCT SUPPLIES | 1,048,492 | 1,057,992.00 | 788,321.51 | 39,481.37 | 89,810.82 | 179,859.67 | 83.0% |
| 25 INSTRUCT TEXTBOOKS | 282,570 | 280,570.00 | 111,671.58 | 6,069.03 | 6,931.83 | 161,966.59 | 42.3% |
| 26 INSTRUCTIONAL, LBY | 59,678 | 59,678.00 | 33,873.12 | 5,855.07 | 5,696.64 | 20,108.24 | 66.3% |
| 27 OTHER, CAP OUTLAY | 530,059 | 527,059.00 | 624,270.14 | 21,726.67 | 10,786.65 | -107,997.79 | 120.5% |
| 29 OTHER, DEBT SERVICE | 1,934,218 | 1,934,218.00 | 1,959,217.50 | .00 | .00 | -24,999.50 | 101.3% |
| 30 OTHER, PROP/CASUALTY | 110,700 | 177,424.00 | 98,878.85 | -1,621.00 | .00 | 78,545.15 | 55.7% |
| 31 OTHER, MAINT BLDG/GR | 734,745 | 732,745.00 | 606,622.69 | 50,719.48 | 75,942.87 | 50,179.44 | 93.2% |
| 32 OTHER, MAINT EQUIP | 119,604 | 119,604.00 | 27,010.39 | 1,579.53 | 6,143.25 | 86,450.36 | 27.7% |
| 34 OTHER, LEGAL SERVICE | 181,350 | 181,350.00 | 83,620.38 | 10,016.32 | 23,967.59 | 73,762.03 | 59.3% |
| 35 OTHER, ADMIN SUPP | 914,051 | 917,978.00 | 630,818.85 | 53,324.56 | 124,612.82 | 162,546.33 | 82.3% |
| 36 OTHER, ATHLETIC SUPP | 57,446 | 67,491.00 | 38,711.49 | 573.67 | 7,544.59 | 21,234.92 | 68.5% |
| 37 OTHER, CUSTODL SUPP | 157,984 | 157,984.00 | 104,477.07 | 19,260.31 | 10,033.04 | 43,473.89 | 72.5% |
| 38 OTHER, SPED TRANSP | 1,826,934 | 1,826,934.00 | 837,897.20 | 776,298.86 | 854,023.58 | 135,013.22 | 92.6% |
| 39 OTHER, STUDENT TRANS | 947,117 | 880,393.00 | 656,352.62 | 37,772.54 | 30,955.73 | 193,084.65 | 78.1% |
| 40 OTHER, TRAVEL/CONF | 120,034 | 121,934.00 | 76,428.32 | 8,439.68 | 31,881.22 | 13,624.46 | 88.8% |
| 41 OTHER, SPED TUITION/ | 5,283,278 | 5,283,278.00 | 2,923,227.54 | 604,643.34 | 2,935,304.86 | -575,254.40 | 110.9% |
| 42 OTHER, UTILITIES | 1,825,133 | 1,825,133.00 | 826,621.69 | 147,087.08 | 14,562.06 | 983,949.25 | 46.1% |
| 43 OTHER, TELEPHONE | 110,045 | 108,151.00 | 48,605.71 | 4,534.58 | 14,081.69 | 45,463.60 | 58.0% |
| 44 OTHER, SEWER | 287,191 | 287,191.00 | 54,887.87 | 7,857.68 | 37,541.80 | 194,761.33 | 32.2% |
| 48 ASSESSMENTS | 576,658 | 576,658.00 | 229,807.00 | 62,844.00 | .00 | 346,851.00 | 39.9% |
| 49 OTHER | 1,500 | 1,500.00 | .00 | .00 | .00 | 1,500.00 | .0% |
| GRAND TOTAL | 83,073,204 | 83,073,204.00 | 50,624,362.06 | 6,812,348.28 | 26,573,503.97 | 5,875,337.97 | 92.9% |

** END OF REPORT - Generated by THOMAS BLONDIN **

03/09/2017 10:26
8399tbl0

|ACTON / BOXBOROUGH REGIONAL SCHOOLS
|BUDGET V ACTUAL

|P 1
|glytdbud

FOR 2017 08

| | ORIGINAL ESTIM REV | REVISED EST REV | ACTUAL YTD REVENUE | ACTUAL MTD REVENUE | REMAINING REVENUE | PCT COLL |
|------------------------------------|-----------------------|--------------------|-----------------------|-----------------------|----------------------|-------------|
| 1000 GENERAL FUND | | | | | | |
| 1000R14 45402 MEDICAID REIMBURSEME | 0 | .00 | -119,645.29 | .00 | 119,645.29 | 100.0% |
| 1000R14 46801 AID - CHAPTER 70 | 0 | -14,531,276.00 | -9,797,380.00 | -1,224,672.00 | -4,733,896.00 | 67.4% |
| 1000R14 46804 ASSESSMENT - SCHOOL | 0 | .00 | .00 | .00 | .00 | .0% |
| 1000R14 46805 ASSESSMENT - CHARTER | 0 | .00 | .00 | .00 | .00 | .0% |
| 1000R14 46806 ASSESSMENT - SPECIAL | 0 | .00 | .00 | .00 | .00 | .0% |
| 1000R14 46807 TRANSPORTATION - PUP | 0 | -1,190,000.00 | -672,913.00 | .00 | -517,087.00 | 56.5%* |
| 1000R14 46809 REIMBURSEMENT - CHAR | 0 | -27,683.00 | -9,567.00 | -3,189.00 | -18,116.00 | 34.6%* |
| 1000R14 46810 DUMMY DESCRIPTION - | 0 | .00 | .00 | .00 | .00 | .0% |
| 1000R14 46811 REGIONAL BONUS AID | 0 | -74,000.00 | -64,703.00 | -64,703.00 | -9,297.00 | 87.4% |
| 1000R14 47501 ASSESSMENT - RGNL - | 0 | -55,547,097.00 | -37,031,398.00 | -4,628,924.75 | -18,515,699.00 | 66.7% |
| 1000R14 47502 ASSESSMENT - RGNL - | 0 | -11,503,148.00 | -7,668,765.36 | -958,595.67 | -3,834,382.64 | 66.7% |
| 1000R14 47503 ASSESSMENT-OTHER-ACT | 0 | .00 | .00 | .00 | .00 | .0% |
| 1000R14 47504 ASSESSMENT-OTHER-BOX | 0 | .00 | .00 | .00 | .00 | .0% |
| 1000R14 48200 EARNINGS - ON INVEST | 0 | .00 | -53,489.27 | -9,204.11 | 53,489.27 | 100.0% |
| 1000R14 48403 REVENUE - MISCELLANE | 0 | .00 | -29,406.30 | -986.10 | 29,406.30 | 100.0% |
| 1000R14 48404 RENTAL INCOME | 0 | .00 | .00 | .00 | .00 | .0% |
| TOTAL GENERAL FUND | 0 | -82,873,204.00 | -55,447,267.22 | -6,890,274.63 | -27,425,936.78 | 66.9% |
| TOTAL REVENUES | 0 | -82,873,204.00 | -55,447,267.22 | -6,890,274.63 | -27,425,936.78 | |
| GRAND TOTAL | 0 | -82,873,204.00 | -55,447,267.22 | -6,890,274.63 | -27,425,936.78 | 66.9% |

** END OF REPORT - Generated by THOMAS BLONDIN **

Acton-Boxborough Regional School District
SCHOOL CALENDAR, 2016-2017
Bold Underlined Dates = No School Days

Elementary Schools will dismiss early on the 1st and 3rd Thursdays of each month, except 9/1/16

| Sept. | M | T | W | T | F |
|----------|----|-----------|-----------|----------|---|
| 29 | 30 | 31 | 1 | 2 | |
| 5 | 6 | 7 | 8 | 9 | |
| 12 | 13 | 14 | 15 | 16 | |
| 19 | 20 | 21 | 22 | 23 | |
| 26 | 27 | 28 | 29 | 30 | |

Teachers' mtgs. – Aug 29 & 30
 Schools Open – Aug 31
 Labor Day – Sept 2 & 5
 *K-12 Early Dis for Prof L. Sept 22
 School Days - 21

| Jan. | M | T | W | T | F |
|-----------|----|----|-----------|----|---|
| 2 | 3 | 4 | 5 | 6 | |
| 9 | 10 | 11 | 12 | 13 | |
| 16 | 17 | 18 | 19 | 20 | |
| 23 | 24 | 25 | 26 | 27 | |
| 30 | 31 | | | | |

Schools Open - Jan 3
 JH Early Dis for Confs – Jan 5
 Martin Luther King Day - Jan 16
 School Days - 20

| Oct. | M | T | W | T | F |
|-----------|-----------|-----------|-----------|----|---|
| 3 | 4 | 5 | 6 | 7 | |
| 10 | 11 | 12 | 13 | 14 | |
| 17 | 18 | 19 | 20 | 21 | |
| 24 | 25 | 26 | 27 | 28 | |
| 31 | | | | | |

NO SCHOOL – OCT 11
 Rosh Hashanah – Oct 3
 Columbus Day – Oct 10
 Yom Kippur – Oct 12
 Elem Early Dis for Confs – Oct 27
 School Days – 17

| Feb. | M | T | W | T | F |
|-----------|-----------|-----------|-----------|-----------|---|
| | | | 1 | 2 | 3 |
| 6 | 7 | 8 | 9 | 10 | |
| 13 | 14 | 15 | 16 | 17 | |
| 20 | 21 | 22 | 23 | 24 | |
| 27 | 28 | | | | |

*K-12 Early Dis for Prof L. – Feb 2
 Presidents' Day - Feb 20
 Winter Recess - Feb 20-24
 School Days – 15

| Nov. | M | T | W | T | F |
|------|----------|----|-----------|-----------|---|
| | | 1 | 2 | 3 | 4 |
| 7 | 8 | 9 | 10 | 11 | |
| 14 | 15 | 16 | 17 | 18 | |
| 21 | 22 | 23 | 24 | 25 | |
| 28 | 29 | 30 | | | |

Prof. Day - Nov. 8 (no school/students)
 Elem Early Dis for Confs – Nov 10
 Veterans Day - Nov 11
 Half Day – Nov 23
 Thanksgiving Recess - Nov 24 & 25
 School Days - 18

| Mar. | M | T | W | T | F |
|------|----|----|-----------|----------|---|
| | | | 1 | 2 | 3 |
| 6 | 7 | 8 | 9 | 10 | |
| 13 | 14 | 15 | 16 | 17 | |
| 20 | 21 | 22 | 23 | 24 | |
| 27 | 28 | 29 | 30 | 31 | |

JH/HS Late Start for students-March 10
 PreS/Elem Early Release - March 30
 HS Late Start **only for students NOT taking MCAS**-March 21, 22, 23
 School Days - 23

| Dec. | M | T | W | T | F |
|-----------|-----------|-----------|-----------|-----------|---|
| | | | | 1 | 2 |
| 5 | 6 | 7 | 8 | 9 | |
| 12 | 13 | 14 | 15 | 16 | |
| 19 | 20 | 21 | 22 | 23 | |
| 26 | 27 | 28 | 29 | 30 | |

*Elem Early Dis for Prof L. – Dec 15
 Jr High Early Dis for Confs –Dec 15 & 20
 Winter Recess - Dec. 26 – Jan 2
 School Days - 17

| Apr. | M | T | W | T | F |
|-----------|-----------|-----------|-----------|-----------|---|
| | | | | | |
| 3 | 4 | 5 | 6 | 7 | |
| 10 | 11 | 12 | 13 | 14 | |
| 17 | 18 | 19 | 20 | 21 | |
| 24 | 25 | 26 | 27 | 28 | |

*K-12 Early Dis for Prof L. – Apr 6
 Good Friday – April 14
 Patriots Day – Apr 17
 Spring Recess - Apr 17-21
 School Days - 14

Note: See attached DESE list for some major religious holidays.

* Professional Learning for Staff Early Dismiss: Sept 22, Dec 15(elem), Feb 2, Apr 6

No School and Delayed Opening Announcements air on TV Channels 4, 5 and 7 and radio stations WBZ and WEIM. See postings at <http://abschools.org>

Acton Town Meeting begins April 3, 2017. Boxborough Meeting begins May 8, 2017.

Acton-Boxborough Regional School Committee Meetings are held twice a month. See <http://www.abschools.org/school-committee> for more information.

| May | M | T | W | T | F |
|-----------|----|----|-----------|----|---|
| 1 | 2 | 3 | 4 | 5 | |
| 8 | 9 | 10 | 11 | 12 | |
| 15 | 16 | 17 | 18 | 19 | |
| 22 | 23 | 24 | 25 | 26 | |
| 29 | 30 | 31 | | | |

HS Late Start **only for students NOT taking MCAS**-May 16, 17
 Memorial Day - May 29
 School Days - 22

| June | M | T | W | T | F |
|------|----|----|-----------|----------|---|
| | | | | 1 | 2 |
| 5 | 6 | 7 | 8 | 9 | |
| 12 | 13 | 14 | 15 | 16 | |
| 19 | 20 | 21 | 22 | 23 | |

Graduation – June 2
 Last day – June ~~19~~ 22 (3 snow days used)
 (June 26 if 5 snow days used)
 School Days – 13
Total Days = 180

Voted by ABRSC 11/19/15, 2/11/16, 2/16/17 (added JH/HS students Late Start 3/10/17 & Preschool/Elem students Early Rel 3/30/17) 3/15/17

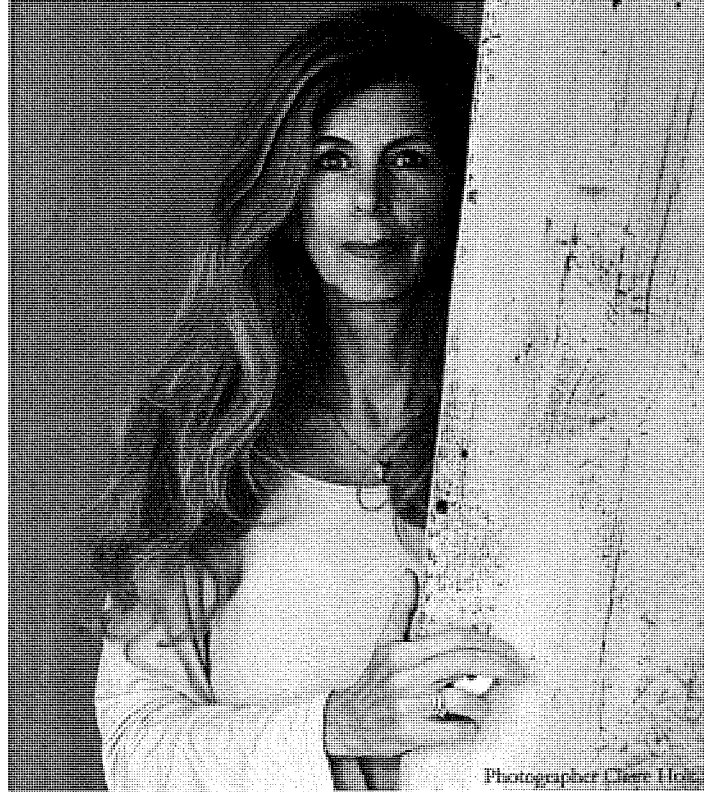


The Robert Creeley Foundation

Building Community through Poetry and the Arts

Presenting Poet

Marie Howe



Photographer Claire Holt

17th Annual Robert Creeley Award Winner

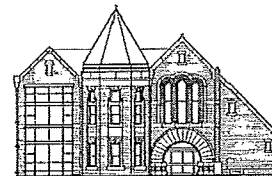
Wednesday, March 29, 2017 at 7:30 PM

Acton-Boxborough Regional High School Auditorium, 36 Charter Road, Acton

Admission is free and open to the public.



Agriculture, Art & Community
Harvard, Massachusetts



Acton Memorial Library Foundation, Inc.



This program is supported in part by grants from the Acton-Boxborough, Chelmsford, Concord and Littleton Cultural Councils, local agencies supported by the Massachusetts Cultural Council.

25.10



TOWN OF ACTON
472 Main Street
Acton, Massachusetts, 01720
Telephone (978) 929-6611
Fax (978) 929-6350

Steven L. Ledoux
Town Manager

FOR IMMEDIATE RELEASE

Town Manager Steven Ledoux is pleased to announce the appointment of Richard Burrows as Police Chief for the Town of Acton. Chief Burrows replaces former Chief Francis Widmayer III, who retired at the end of January 2017.

Chief Burrows has nearly 30 years of law enforcement experience, including 10 years as Deputy Chief in Tyngsborough and 4 years as Deputy Chief in Acton. He holds a Master's Degree in Criminal Justice from the University of Massachusetts / Lowell and is a 2004 graduate of the FBI Academy.

Chief Burrow's appointment is effective March 12, 2017.